



**Water Monitoring Result at C7 - Windsor House
Mid-Flood Tide**

Date	Time	Weather Condition	Sampling Depth		Water Temperature			pH			Salinity			DO Saturation		DO		Turbidity			Suspended Solids			
					°C			-			ppt			%		mg/L		NTU			mg/L			
					Value	Average		Value	Average		Value	Average		Value	Average		Value	Average	Value	Average	Value	Average	Value	Average
28/12/2015	10:10	Fine	Middle	-	19.80	19.80	19.75	8.23	8.23	8.26	31.97	31.97	31.98	90.8	90.3	90.2	6.86	6.83	6.82	6.36	6.35	6.34	3	2.50
	10:12		Middle	-	19.70	19.70		8.29	8.29		31.98	31.98		89.6	89.9		6.78	6.80		6.32	6.31		2	
30/12/2015	11:00	Fine	Middle	-	19.90	19.90	19.90	8.36	8.36	8.37	32.14	32.14	32.15	91.1	91.3	90.7	6.86	6.89	6.84	5.48	5.47	5.48	5	5.50
	11:02		Middle	-	19.90	19.90		8.37	8.37		32.15	32.15		90.2	90.0		6.80	6.79		5.47	5.48		6	
2/1/2016	12:50	Fine	Middle	-	20.50	20.50	20.45	8.32	8.32	8.36	25.40	25.40	25.41	85.5	83.6	82.6	6.64	6.50	6.42	5.75	5.68	5.69	<2	<2
	12:52		Middle	-	20.40	20.40		8.40	8.40		25.41	25.41		81.1	80.2		6.30	6.23		5.68	5.66		<2	
4/1/2016	10:48	Fine	Middle	-	21.10	21.10	21.15	8.39	8.39	8.39	23.53	23.53	23.54	91.9	93.2	92.7	7.12	7.22	7.18	9.69	9.77	9.72	<2	2.00
	10:50		Middle	-	21.20	21.20		8.39	8.39		23.54	23.54		92.9	92.8		7.19	7.19		9.73	9.69		2	
6/1/2016	11:55	Fine	Middle	-	22.20	22.20	22.30	8.23	8.23	8.25	23.34	23.34	23.33	90.5	92.2	91.8	6.87	7.00	6.96	9.05	8.98	8.95	4	4.50
	11:57		Middle	-	22.40	22.40		8.26	8.26		23.31	23.31		92.0	92.6		6.98	6.97		8.90	8.88		5	
8/1/2016	13:40	Fine	Middle	-	21.30	21.30	21.40	8.26	8.26	8.28	24.42	24.42	24.42	93.1	93.6	93.0	7.14	7.17	7.11	3.67	3.68	3.70	3	3.50
	13:42		Middle	-	21.50	21.50		8.30	8.30		24.41	24.41		93.2	92.2		7.13	7.00		3.72	3.73		4	
11/1/2016	9:50	Rainy	Middle	-	19.90	19.90	19.85	8.37	8.37	8.38	31.16	31.16	31.16	92.2	91.5	91.6	6.99	6.94	6.95	6.16	6.06	6.07	<2	<2
	9:52		Middle	-	19.80	19.80		8.38	8.38		31.15	31.15		91.7	91.0		6.96	6.90		6.03	6.02		<2	
13/1/2016	10:45	Fine	Middle	-	19.70	19.70	19.75	8.38	8.38	8.39	30.80	30.80	30.80	80.3	80.1	79.9	6.12	6.10	6.09	5.62	5.62	5.61	8	8.00
	10:47		Middle	-	19.80	19.80		8.39	8.39		30.80	30.80		79.8	79.5		6.07	6.05		5.62	5.58		8	
15/1/2016	12:46	Rainy	Middle	-	18.50	18.50	18.45	8.29	8.29	8.31	30.72	30.72	30.72	80.0	72.9	76.1	6.26	6.08	6.05	8.88	8.84	8.85	5	4.00
	12:48		Middle	-	18.40	18.40		8.33	8.33		30.72	30.72		76.2	75.4		5.95	5.89		8.84	8.83		3	
18/1/2016	9:58	Fine	Middle	-	18.70	18.70	18.65	8.34	8.34	8.36	30.63	30.63	30.65	82.1	82.1	82.1	6.38	6.39	6.38	8.27	8.26	8.27	4	3.50
	10:00		Middle	-	18.60	18.60		8.37	8.37		30.67	30.67		81.9	82.1		6.37	6.39		8.27	8.27		3	
20/1/2016	16:05	Cloudy	Middle	-	18.40	18.40	18.30	8.42	8.42	8.44	31.02	31.02	31.03	96.3	95.8	95.1	7.52	7.49	7.43	7.36	7.39	7.39	3	3.50
	16:07		Middle	-	18.20	18.20		8.46	8.46		31.04	31.04		94.7	93.7		7.41	7.30		7.41	7.39		4	
22/1/2016	17:15	Rainy	Middle	-	17.70	17.70	17.65	8.24	8.24	8.31	30.92	30.92	30.93	97.5	97.2	96.6	7.72	7.70	7.65	9.32	9.32	<u>9.32</u>	3	3.50
	17:17		Middle	-	17.60	17.60		8.37	8.37		30.94	30.94		96.0	95.6		7.61	7.58		9.32	9.33		4	
25/1/2016	10:00	Fine	Middle	-	14.90	14.90	14.80	8.36	8.36	8.39	31.02	31.02	31.04	92.0	91.8	91.6	7.70	7.68	7.67	7.48	7.47	7.48	3	2.50
	10:02		Middle	-	14.70	14.70		8.42	8.42		31.05	31.05		91.6	91.1		7.67	7.64		7.47	7.48		2	

Remarks:
Single underline denotes exceedance over Action Level.
Double underline denotes exceedance over Limit Level.



**Water Monitoring Result at C1 - HKCEC Extension
Mid-Flood Tide**

Date	Time	Weather Condition	Sampling Depth		Water Temperature			pH			Salinity			DO Saturation			DO			Turbidity			Suspended Solids	
					°C			-			ppt			%			mg/L			NTU			mg/L	
					Value	Value	Average	Value	Value	Average	Value	Value	Average	Value	Value	Average	Value	Value	Average	Value	Value	Average	Value	Value
28/12/2015	9:29	Fine	Middle	2.5	19.10	19.10	19.05	8.40	8.40	8.40	32.22	32.22	32.22	77.5	75.4	75.4	5.93	5.77	5.77	7.98	7.97	7.96	9	8.00
	9:31		Middle	2.5	19.00	19.00		8.40	8.40		8.40	32.22		32.22	32.22		74.7	74.1		74.1	5.71		5.65	
30/12/2015	10:15	Fine	Middle	2.5	19.10	19.10	19.05	8.41	8.41	8.41	32.20	32.20	32.21	82.8	82.4	81.5	6.34	6.31	6.24	7.24	7.35	7.31	5	5.00
	10:17		Middle	2.5	19.00	19.00		8.41	8.41		8.41	32.21		32.21	32.21		81.4	79.3		79.3	6.23		6.07	
2/1/2016	10:08	Fine	Middle	2.5	19.70	19.70	19.70	8.38	8.38	8.39	31.94	31.94	31.94	82.1	81.1	80.3	6.21	6.15	6.08	4.24	4.24	4.16	<2	<2
	10:10		Middle	2.5	19.70	19.70		8.39	8.39		8.39	31.94		31.94	31.94		79.6	78.3		78.3	6.03		5.93	
4/1/2016	14:18	Fine	Middle	2.5	20.60	20.60	20.60	8.33	8.33	8.33	31.76	31.76	31.76	76.9	77.2	77.3	5.73	5.76	5.76	5.93	5.92	5.92	3	3.50
	14:20		Middle	2.5	20.60	20.60		8.33	8.33		8.33	31.75		31.75	31.75		77.7	77.3		77.3	5.79		5.76	
6/1/2016	15:40	Fine	Middle	3.0	20.80	20.80	20.85	8.32	8.32	8.33	31.32	31.32	31.32	90.5	90.9	91.0	6.74	6.77	6.78	5.92	5.99	5.95	3	3.50
	15:42		Middle	3.0	20.90	20.90		8.33	8.33		8.33	31.32		31.32	31.32		91.3	91.4		91.4	6.80		6.80	
8/1/2016	16:17	Fine	Middle	2.5	20.10	20.10	20.10	8.37	8.37	8.37	31.45	31.45	31.46	80.9	80.8	80.9	6.10	6.09	6.10	6.22	6.21	6.22	2	2.00
	16:19		Middle	2.5	20.10	20.10		8.37	8.37		8.37	31.47		31.47	31.47		81.1	80.7		80.7	6.12		6.09	
11/1/2016	9:09	Rainy	Middle	2.5	19.20	19.20	19.20	8.46	8.46	8.47	31.46	31.46	31.49	84.4	84.9	84.4	6.48	6.50	6.47	5.49	5.44	5.50	3	3.00
	9:11		Middle	2.5	19.20	19.20		8.47	8.47		8.47	31.51		31.51	31.51		84.6	83.8		83.8	6.47		6.41	
13/1/2016	9:54	Fine	Middle	2.5	18.50	18.50	18.65	8.45	8.45	8.45	30.15	30.15	30.62	85.3	84.0	82.8	6.61	6.49	6.41	5.11	5.22	5.14	2	2.00
	9:56		Middle	2.5	18.80	18.80		8.45	8.45		8.45	31.08		31.08	31.08		81.8	80.2		80.2	6.33		6.21	
15/1/2016	11:15	Rainy	Middle	2.5	18.00	18.00	18.00	8.47	8.47	8.48	31.11	31.11	31.12	82.4	80.0	79.3	6.47	6.28	6.23	8.13	8.11	8.12	4	3.50
	11:17		Middle	2.5	18.00	18.00		8.48	8.48		8.48	31.12		31.12	31.12		78.1	76.7		76.7	6.13		6.02	
18/1/2016	11:14	Fine	Middle	3.0	18.40	18.40	13.78	8.49	8.49	8.50	31.15	31.15	31.16	92.5	92.8	92.4	7.21	7.24	7.21	9.13	9.10	9.09	4	4.00
	11:16		Middle	3.0	0.00	18.30		8.50	8.50		8.50	31.16		31.16	31.16		92.0	92.2		92.2	7.18		7.19	
20/1/2016	15:35	Cloudy	Middle	3.0	17.60	17.60	17.60	8.54	8.54	8.55	31.32	31.32	31.32	96.3	95.5	95.1	7.61	7.55	7.52	7.07	7.16	7.26	5	4.50
	15:37		Middle	3.0	17.60	17.60		8.56	8.56		8.56	31.32		31.32	31.32		94.2	94.2		94.2	7.45		7.45	
22/1/2016	16:22	Rainy	Middle	2.5	17.60	17.60	17.60	8.52	8.52	8.53	31.42	31.42	31.23	84.7	83.5	83.0	6.71	6.61	6.58	8.30	8.29	8.29	3	2.50
	16:24		Middle	2.5	17.60	17.60		8.53	8.53		8.53	31.03		31.03	31.03		82.2	81.7		81.7	6.51		6.47	
25/1/2016	10:50	Fine	Middle	2.5	14.90	14.90	14.95	8.51	8.51	8.51	31.32	31.32	31.34	85.8	85.2	84.7	7.14	7.10	7.05	8.66	8.65	8.63	4	4.00
	10:52		Middle	2.5	15.00	15.00		8.51	8.51		8.51	31.35		31.35	31.35		84.0	83.7		83.7	7.00		6.97	

Remarks:
Single underline denotes exceedance over Action Level.
Double underline denotes exceedance over Limit Level.



**Water Monitoring Result at P1 - HKCEC Phase I
Mid-Flood Tide**

Date	Time	Weather Condition	Sampling Depth		Water Temperature			pH			Salinity			DO Saturation			DO			Turbidity			Suspended Solids	
					°C			-			ppt			%			mg/L			NTU			mg/L	
					Value	Average		Value	Average		Value	Average		Value	Average		Value	Average		Value	Average		Value	Average
28/12/2015	9:13	Fine	Middle	2.5	18.50	18.50	18.50	8.33	8.34	8.35	31.99	31.99	32.03	84.0	81.9	81.6	6.48	6.34	6.31	6.41	6.42	6.40	4	4.00
	9:15		Middle	2.5	18.50	18.50		8.37	8.37		32.07	32.07		80.2	80.3		6.21	6.22		6.42	6.35		4	
30/12/2015	9:59	Fine	Middle	2.5	18.90	18.90	18.75	8.30	8.30	8.33	32.20	32.20	32.21	87.9	85.7	84.8	6.78	6.61	6.54	5.78	5.76	5.77	5	4.00
	10:01		Middle	2.5	18.60	18.60		8.35	8.35		32.21	32.21		84.3	81.3		6.50	6.27		5.76	5.78		3	
2/1/2016	9:52	Fine	Middle	2.5	19.50	19.50	19.50	8.36	8.36	8.37	32.04	32.04	32.04	80.1	79.3	78.7	6.09	6.02	5.98	5.06	4.88	4.87	2	2.00
	9:54		Middle	2.5	19.50	19.50		8.37	8.37		32.04	32.04		78.1	77.4		5.93	5.88		4.84	4.69		<2	
4/1/2016	14:02	Fine	Middle	2.5	21.50	21.50	21.50	8.28	8.28	8.29	31.86	31.86	31.87	77.4	76.9	76.5	5.67	5.63	5.61	4.28	4.32	4.33	2	2.00
	14:04		Middle	2.5	21.50	21.50		8.29	8.29		31.87	31.87		76.2	75.6		5.58	5.54		4.34	4.39		2	
6/1/2016	15:20	Fine	Middle	3.0	22.10	22.10	22.20	8.26	8.26	8.27	31.41	31.41	31.34	97.7	98.2	97.6	7.10	7.13	7.09	7.12	7.08	7.08	4	4.50
	15:22		Middle	3.0	22.30	22.30		8.28	8.28		31.27	31.27		97.6	97.0		7.09	7.04		7.07	7.04		5	
8/1/2016	16:01	Fine	Middle	2.5	20.20	20.20	20.25	8.22	8.22	8.25	31.60	31.60	31.56	84.6	84.5	84.4	6.36	6.35	6.35	5.10	4.89	4.92	3	2.50
	16:03		Middle	2.5	20.30	20.30		8.27	8.27		31.52	31.52		84.2	84.3		6.33	6.34		4.85	4.83		2	
11/1/2016	8:53	Rainy	Middle	2.5	19.10	19.10	19.05	8.35	8.35	8.38	31.38	31.38	31.39	96.9	94.9	94.3	7.45	7.30	7.24	4.00	4.00	4.00	3	3.00
	8:55		Middle	2.5	19.00	19.00		8.41	8.41		31.40	31.40		93.1	92.2		7.11	7.09		4.00	4.01		3	
13/1/2016	9:38	Fine	Middle	2.5	18.00	18.00	18.00	8.37	8.37	8.39	30.99	30.99	31.01	79.3	80.6	80.2	6.24	6.34	6.31	6.54	6.54	6.54	2	2.50
	9:40		Middle	2.5	18.00	18.00		8.40	8.40		31.02	31.02		80.6	80.2		6.34	6.30		6.54	6.53		3	
15/1/2016	10:59	Rainy	Middle	2.5	17.50	17.50	17.45	8.38	8.38	8.40	30.90	30.90	30.92	81.7	81.4	80.9	6.49	6.47	6.43	8.06	8.01	8.00	2	2.00
	11:01		Middle	2.5	17.40	17.40		8.41	8.41		30.93	30.93		80.5	80.0		6.40	6.34		8.01	7.90		2	
18/1/2016	14:58	Fine	Middle	3.0	18.30	18.30	18.40	8.28	8.28	8.33	30.95	30.95	30.94	91.1	91.2	90.8	7.11	7.12	7.09	7.62	7.64	7.65	<2	<2
	15:00		Middle	3.0	18.50	18.50		8.38	8.38		30.93	30.93		90.7	90.3		7.08	7.05		7.68	7.65		<2	
20/1/2016	15:10	Cloudy	Middle	3.0	17.30	17.30	17.30	8.47	8.47	8.49	31.33	31.33	31.44	95.3	96.3	95.5	7.58	7.66	7.61	7.48	7.48	7.47	3	2.50
	15:12		Middle	3.0	17.30	17.30		8.51	8.51		31.55	31.55		95.9	94.5		7.62	7.57		7.47	7.45		2	
22/1/2016	16:06	Rainy	Middle	2.5	17.20	17.20	17.15	8.40	8.40	8.42	31.02	31.02	31.05	86.4	86.6	86.8	6.90	6.91	6.93	6.55	6.52	6.51	3	2.50
	16:08		Middle	2.5	17.10	17.10		8.43	8.43		31.07	31.07		86.9	87.2		6.95	6.97		6.48	6.48		2	
25/1/2016	10:34	Fine	Middle	2.5	13.50	13.50	13.45	8.44	8.44	8.47	31.00	31.00	31.08	90.1	89.3	88.3	7.75	7.68	7.60	8.62	8.64	8.65	4	4.00
	10:36		Middle	2.5	13.40	13.40		8.49	8.49		31.15	31.15		87.6	86.0		7.54	7.41		8.66	8.67		4	

Remarks:
Single underline denotes exceedance over Action Level.
Double underline denotes exceedance over Limit Level.



**Water Monitoring Result at P3 - APA
Mid-Flood Tide**

Date	Time	Weather Condition	Sampling Depth		Water Temperature			pH			Salinity			DO Saturation		DO		Turbidity		Suspended Solids				
					°C			-			ppt			%		mg/L		NTU		mg/L				
					Value	Average		Value	Average		Value	Average		Value	Average		Value	Average	Value	Average	Value	Average	Value	Average
28/12/2015	9:17	Fine	Middle	2.5	18.80	18.80	18.80	8.37	8.37	8.37	32.07	32.07	32.09	74.6	73.2	72.9	5.74	5.63	5.61	7.89	7.93	7.92	5	5.50
	9:19		Middle	2.5	18.80	18.80		8.37	8.37		32.10	32.10		72.1	71.6		5.55	5.51		7.93	7.91		6	
30/12/2015	10:03	Fine	Middle	2.5	18.50	18.50	18.50	8.37	8.37	8.38	32.18	32.18	32.19	86.1	84.7	84.4	6.65	6.55	6.52	6.97	6.90	6.82	4	4.00
	10:05		Middle	2.5	18.50	18.50		8.38	8.38		32.19	32.19		83.8	83.0		6.48	6.41		6.54	6.87		4	
2/1/2016	9:56	Fine	Middle	2.5	19.40	19.40	19.40	8.38	8.38	8.38	32.04	32.04	32.04	82.8	82.2	82.0	6.30	6.25	6.23	4.42	4.33	4.32	3	2.50
	9:58		Middle	2.5	19.40	19.40		8.38	8.38		32.04	32.04		81.7	81.1		6.21	6.17		4.28	4.25		2	
4/1/2016	14:06	Fine	Middle	2.5	21.00	21.00	20.95	8.31	8.31	8.31	31.74	31.74	31.80	84.6	83.0	81.8	6.28	6.16	6.07	5.37	5.20	5.29	2	2.00
	14:08		Middle	2.5	20.90	20.90		8.31	8.31		31.85	31.85		81.0	78.7		6.01	5.84		5.28	5.30		<2	
6/1/2016	15:25	Fine	Middle	3.0	21.10	21.10	21.15	8.30	8.30	8.30	31.39	31.39	31.39	93.4	93.8	93.6	6.92	6.95	6.93	4.90	4.90	4.87	2	2.00
	15:27		Middle	3.0	21.20	21.20		8.30	8.30		31.38	31.38		93.7	93.4		6.94	6.91		4.85	4.82		2	
8/1/2016	16:05	Fine	Middle	2.5	19.90	19.90	19.95	8.30	8.30	8.32	31.51	31.51	31.51	85.1	83.3	82.9	6.47	6.29	6.27	6.00	6.04	6.03	<2	<2
	16:07		Middle	2.5	20.00	20.00		8.33	8.33		31.50	31.50		82.4	80.8		6.22	6.10		6.07	6.01		<2	
11/1/2016	8:57	Rainy	Middle	2.5	19.10	19.10	19.10	8.42	8.42	8.43	31.25	31.25	31.32	88.0	86.4	86.1	6.76	6.68	6.63	3.55	3.54	3.59	2	3.00
	8:59		Middle	2.5	19.10	19.10		8.43	8.43		31.38	31.38		86.0	84.1		6.61	6.46		3.63	3.63		4	
13/1/2016	9:42	Fine	Middle	2.5	18.10	18.10	18.10	8.41	8.41	8.42	30.84	30.84	30.96	85.3	84.5	84.5	6.69	6.63	6.63	6.77	6.75	6.70	3	3.50
	9:44		Middle	2.5	18.10	18.10		8.42	8.42		31.07	31.07		84.0	84.0		6.59	6.59		6.72	6.55		4	
15/1/2016	11:03	Rainy	Middle	2.5	17.40	17.40	17.40	8.42	8.42	8.43	31.04	31.04	31.05	83.0	82.4	81.6	6.60	6.55	6.48	6.96	6.92	6.92	2	2.00
	11:05		Middle	2.5	17.40	17.40		8.43	8.43		31.05	31.05		81.0	79.8		6.44	6.32		6.90	6.88		2	
18/1/2016	11:02	Fine	Middle	3.0	18.20	18.20	18.20	8.41	8.41	8.43	30.98	30.98	30.98	92.4	92.4	92.4	7.24	7.24	7.24	7.21	7.20	7.20	3	2.50
	11:04		Middle	3.0	18.20	18.20		8.44	8.44		30.98	30.98		92.5	92.4		7.25	7.24		7.20	7.20		2	
20/1/2016	15:15	Cloudy	Middle	3.0	17.30	17.30	17.30	8.52	8.52	8.53	31.31	31.31	31.31	94.5	95.4	94.9	7.52	7.59	7.55	7.35	7.26	7.24	2	2.00
	15:20		Middle	3.0	17.30	17.30		8.53	8.53		31.31	31.31		94.3	95.3		7.50	7.58		7.23	7.10		2	
22/1/2016	16:10	Rainy	Middle	2.5	17.20	17.20	17.20	8.45	8.45	8.46	32.06	32.06	31.88	87.2	86.3	85.7	6.95	6.88	6.83	7.96	7.97	7.94	2	2.50
	16:12		Middle	2.5	17.20	17.20		8.47	8.47		31.19	32.19		85.0	84.3		6.77	6.72		7.89	7.95		3	
25/1/2016	10:38	Fine	Middle	2.5	13.60	13.60	13.60	8.50	8.50	8.50	31.33	31.33	31.33	84.7	84.3	84.1	7.26	7.22	7.20	8.95	8.95	8.96	4	4.00
	10:40		Middle	2.5	13.60	13.60		8.50	8.50		31.32	31.32		83.8	83.4		7.18	7.15		8.97	8.97		4	

Remarks:
Single underline denotes exceedance over Action Level.
Double underline denotes exceedance over Limit Level.



**Water Monitoring Result at P4 - SOC
Mid-Flood Tide**

Date	Time	Weather Condition	Sampling Depth		Water Temperature			pH			Salinity			DO Saturation			DO			Turbidity			Suspended Solids	
					°C			-			ppt			%			mg/L			NTU			mg/L	
					Value	Average		Value	Average		Value	Average		Value	Average		Value	Average		Value	Average		Value	Average
28/12/2015	9:21	Fine	Middle	2.5	18.80	18.80	18.80	8.37	8.37	8.38	32.22	32.22	32.23	81.5	81.1	81.1	6.26	6.24	6.23	8.67	8.55	8.58	7	7.50
	9:23		Middle	2.5	18.80	18.80		8.38	8.38		32.23	32.23		80.9	80.9		6.22	6.21		8.54	8.54		8	
30/12/2015	10:07	Fine	Middle	2.5	18.60	18.60	18.65	8.38	8.38	8.39	32.07	32.07	32.13	85.2	84.5	83.7	6.57	6.52	6.46	8.68	8.72	8.61	5	5.50
	10:09		Middle	2.5	18.70	18.70		8.39	8.39		32.19	32.19		83.2	82.0		6.42	6.32		8.55	8.49		6	
2/1/2016	10:00	Fine	Middle	2.5	19.50	19.50	19.50	8.38	8.38	8.39	32.02	32.04	32.03	78.8	78.6	78.2	5.99	5.98	5.95	4.40	4.44	4.46	3	3.00
	10:02		Middle	2.5	19.50	19.50		8.39	8.39		32.03	32.03		78.2	77.1		5.95	5.86		4.50	4.49		3	
4/1/2016	14:10	Fine	Middle	2.5	20.70	20.70	20.70	8.32	8.32	8.32	31.57	31.57	31.68	84.0	82.8	82.0	6.26	6.16	6.11	4.14	4.01	4.05	<2	<2
	14:12		Middle	2.5	20.70	20.70		8.32	8.32		31.78	31.78		81.2	80.0		6.05	5.95		4.00	4.03		<2	
6/1/2016	15:30	Fine	Middle	3.0	20.80	20.80	20.85	8.31	8.31	8.31	31.32	31.32	31.32	90.2	90.3	90.1	6.72	6.72	6.70	2.74	2.73	2.73	2	2.00
	15:32		Middle	3.0	20.90	20.90		8.31	8.31		31.32	31.32		90.0	89.8		6.69	6.67		2.72	2.71		2	
8/1/2016	16:09	Fine	Middle	2.5	20.00	20.00	20.05	8.34	8.34	8.35	31.44	31.44	31.44	83.5	82.1	81.7	6.31	6.20	6.17	5.21	5.21	5.22	2	2.00
	16:11		Middle	2.5	20.10	20.10		8.36	8.36		31.44	31.44		81.2	80.0		6.13	6.05		5.22	5.22		<2	
11/1/2016	9:01	Rainy	Middle	2.5	19.10	19.10	19.15	8.43	8.43	8.44	31.42	31.42	31.44	86.9	85.1	84.5	6.66	6.52	6.48	6.45	6.42	6.62	5	4.50
	9:03		Middle	2.5	19.20	19.20		8.44	8.44		31.46	31.46		83.5	82.4		6.41	6.32		6.90	6.70		4	
13/1/2016	9:46	Fine	Middle	2.5	18.10	18.10	18.15	8.42	8.42	8.43	30.67	30.67	30.89	86.2	84.0	83.1	6.74	6.57	6.50	5.75	5.63	5.72	3	4.00
	9:48		Middle	2.5	18.20	18.20		8.44	8.44		31.11	31.11		81.8	80.5		6.40	6.30		5.74	5.75		5	
15/1/2016	11:07	Rainy	Middle	2.5	17.60	17.60	17.60	8.44	8.44	8.42	31.07	31.07	31.08	83.0	81.0	81.0	6.57	6.42	6.42	6.79	6.81	6.75	2	3.00
	11:09		Middle	2.5	17.60	17.60		8.40	8.40		31.07	31.10		80.3	79.7		6.36	6.31		6.71	6.69		4	
18/1/2016	11:06	Fine	Middle	3.0	18.40	18.40	18.40	8.45	8.45	8.45	31.07	31.07	31.07	90.2	89.8	88.5	7.03	7.01	6.90	7.97	7.95	7.97	5	5.50
	11:08		Middle	3.0	18.40	18.40		8.45	8.45		31.07	31.07		88.8	85.1		6.93	6.64		7.97	7.99		6	
20/1/2016	15:25	Cloudy	Middle	3.0	17.40	17.40	17.40	8.54	8.54	8.55	31.30	31.30	31.31	95.0	95.8	95.8	7.54	7.60	7.60	8.13	8.21	8.14	3	3.00
	15:27		Middle	3.0	17.40	17.40		8.55	8.55		31.31	31.31		96.2	96.0		7.64	7.62		8.15	8.07		3	
22/1/2016	16:14	Rainy	Middle	2.5	17.30	17.30	17.35	8.49	8.49	8.50	30.84	30.84	31.15	86.0	84.6	84.7	6.89	6.73	6.61	8.79	8.81	8.80	2	3.00
	16:16		Middle	2.5	17.40	17.40		8.50	8.50		31.96	30.95		88.4	79.6		6.47	6.33		8.82	8.77		4	
25/1/2016	10:42	Fine	Middle	2.5	14.40	14.40	14.40	8.50	8.50	8.51	31.26	31.26	31.27	80.6	79.6	79.6	6.79	6.71	6.71	8.57	8.56	8.57	4	4.00
	10:44		Middle	2.5	14.40	14.40		8.51	8.51		31.27	31.27		79.3	78.8		6.68	6.64		8.57	8.59		4	

Remarks:
Single underline denotes exceedance over Action Level.
Double underline denotes exceedance over Limit Level.



**Water Monitoring Result at P5 - WCT / RT / IT
Mid-Flood Tide**

Date	Time	Weather Condition	Sampling Depth		Water Temperature			pH			Salinity			DO Saturation			DO		Turbidity			Suspended Solids		
					°C			-			ppt			%			mg/L		NTU			mg/L		
					Value	Average		Value	Average		Value	Average		Value	Average		Value	Average		Value	Average	Value	Average	Value
28/12/2015	9:25	Fine	Middle	2.5	19.00	19.00	18.95	8.39	8.39	8.39	32.20	32.20	32.21	78.2	77.5	77.0	6.00	5.94	5.90	8.08	8.04	8.08	10	9.00
	9:27		Middle	2.5	18.90	18.90		8.39	8.39		32.22	32.22		76.5	75.6		5.87	5.80		8.07	8.13		8	
30/12/2015	10:11	Fine	Middle	2.5	18.80	18.80	18.80	8.40	8.40	8.40	32.20	32.20	32.21	86.9	84.4	83.6	6.68	6.49	6.43	8.54	8.54	8.55	5	5.50
	10:13		Middle	2.5	18.80	18.80		8.40	8.40		32.21	32.21		82.1	81.1		6.31	6.23		8.55	8.57		6	
2/1/2016	10:04	Fine	Middle	2.5	19.70	19.70	19.70	8.39	8.39	8.39	31.84	31.84	31.85	82.3	81.0	80.4	6.23	6.14	6.09	3.19	3.16	3.16	<2	<2
	10:06		Middle	2.5	19.70	19.70		8.39	8.39		31.86	31.86		80.0	78.3		6.06	5.93		3.15	3.14		<2	
4/1/2016	14:14	Fine	Middle	2.5	20.60	20.60	20.65	8.33	8.33	8.33	31.64	31.64	31.69	82.8	81.0	79.9	6.17	6.04	5.96	5.31	5.32	5.26	<2	2.00
	14:16		Middle	2.5	20.70	20.70		8.33	8.33		31.74	31.74		78.5	77.4		5.85	5.77		5.33	5.07		2	
6/1/2016	15:35	Fine	Middle	3.0	20.70	20.70	20.75	8.31	8.31	8.32	31.30	31.30	31.32	91.4	90.7	91.0	6.82	6.76	6.79	5.89	5.89	5.90	4	4.00
	15:37		Middle	3.0	20.80	20.80		8.32	8.32		31.33	31.33		91.1	90.8		6.79	6.77		5.90	5.90		4	
8/1/2016	16:13	Fine	Middle	2.5	20.00	20.00	20.05	8.36	8.36	8.37	31.41	31.41	31.42	84.2	82.5	81.8	6.36	6.23	6.18	3.96	3.76	3.82	<2	<2
	16:15		Middle	2.5	20.10	20.10		8.37	8.37		31.42	31.42		80.9	79.7		6.10	6.02		3.73	3.83		<2	
11/1/2016	9:05	Rainy	Middle	2.5	19.20	19.20	19.20	8.45	8.45	8.46	31.53	31.53	31.53	85.7	84.9	85.6	6.56	6.52	6.56	6.43	6.43	6.37	4	3.50
	9:07		Middle	2.5	19.20	19.20		8.46	8.46		31.53	31.53		85.7	86.2		6.57	6.60		6.31	6.30		3	
13/1/2016	9:50	Fine	Middle	2.5	18.30	18.30	18.40	8.43	8.43	8.44	30.18	30.18	30.65	86.0	84.7	85.5	6.69	6.58	6.65	7.21	7.27	7.16	6	6.00
	9:52		Middle	2.5	18.50	18.50		8.45	8.45		31.11	31.11		85.4	86.0		6.65	6.68		7.01	7.15		6	
15/1/2016	11:11	Rainy	Middle	2.5	17.90	17.90	17.90	8.46	8.46	8.46	31.13	31.13	31.15	80.1	79.3	79.0	6.31	6.24	6.22	7.08	7.08	7.13	4	3.50
	11:13		Middle	2.5	17.90	17.90		8.46	8.46		31.16	31.16		78.7	78.0		6.20	6.14		7.16	7.18		3	
18/1/2016	11:10	Fine	Middle	3.0	18.40	18.40	18.40	8.47	8.47	8.48	31.12	31.12	31.12	90.9	88.7	89.1	7.09	6.92	6.95	8.00	8.00	8.00	3	3.00
	11:12		Middle	3.0	18.40	18.40		8.48	8.48		31.12	31.12		88.2	88.6		6.88	6.91		8.00	8.00		3	
20/1/2016	15:30	Cloudy	Middle	3.0	17.60	17.60	17.60	8.51	8.51	8.53	31.34	31.34	31.33	99.1	99.3	98.3	7.84	7.86	7.80	8.62	8.62	8.62	4	3.00
	15:32		Middle	3.0	17.60	17.60		8.54	8.54		31.32	31.32		98.2	96.7		7.82	7.66		8.62	8.63		2	
22/1/2016	16:18	Rainy	Middle	2.5	17.40	17.40	17.40	8.51	8.51	8.52	30.70	30.70	30.82	86.8	84.9	84.4	6.90	6.75	6.71	8.22	8.26	8.24	4	4.00
	16:20		Middle	2.5	17.40	17.40		8.52	8.52		30.93	30.93		83.3	82.5		6.63	6.56		8.25	8.22		4	
25/1/2016	10:46	Fine	Middle	2.5	14.50	14.50	14.50	8.51	8.51	8.51	31.31	31.31	31.33	87.3	85.9	85.5	7.33	7.21	7.18	8.83	8.86	8.91	3	3.00
	10:48		Middle	2.5	14.50	14.50		8.51	8.51		31.35	31.35		84.8	84.1		7.12	7.07		8.97	8.98		3	

Remarks:
Single underline denotes exceedance over Action Level.
Double underline denotes exceedance over Limit Level.



**Water Monitoring Result at RW21-P789 - Sun Hung Kai Centre
Mid-Flood Tide**

Date	Time	Weather Condition	Sampling Depth		Water Temperature			pH			Salinity			DO Saturation		DO		Turbidity		Suspended Solids				
					°C			-			ppt			%		mg/L		NTU		mg/L				
			m	Value	Average	Value	Average	Value	Average	Value	Average	Value	Average	Value	Average	Value	Average	Value	Average	Value	Average			
28/12/2015	9:41	Fine	Middle	3.5	19.10	19.10	19.10	8.35	8.35	8.37	32.14	32.14	32.17	84.3	82.6	82.3	6.44	6.31	6.29	6.41	6.14	6.23	4	3.50
	9:48		Middle	3.5	19.10	19.10		8.38	8.38		32.19	32.19		81.5	80.6		6.23	6.16		6.29	6.09		3	
30/12/2015	10:35	Fine	Middle	3.5	19.00	19.00	19.00	8.40	8.40	8.40	32.19	32.19	32.20	80.9	80.4	80.3	6.20	6.16	6.16	8.57	8.55	<u>8.54</u>	7	7.50
	10:37		Middle	3.5	19.00	19.00		8.40	8.40		32.20	32.20		80.2	79.7		6.15	6.11		8.52	8.50		8	
2/1/2016	10:24	Fine	Middle	3.5	19.60	19.60	19.60	8.36	8.36	8.37	32.04	32.04	32.04	82.4	81.9	82.4	6.25	6.21	6.25	5.90	5.89	5.89	3	3.50
	10:26		Middle	3.5	19.60	19.60		8.38	8.38		32.03	32.03		82.1	83.2		6.21	6.31		5.89	5.89		4	
4/1/2016	14:33	Fine	Middle	3.5	20.60	20.60	20.65	8.25	8.25	8.27	31.92	31.92	31.90	88.4	86.9	86.3	6.58	6.47	6.43	5.30	5.35	5.34	3	3.00
	14:35		Middle	3.5	20.70	20.70		8.29	8.29		31.87	31.87		85.9	84.1		6.40	6.26		5.35	5.37		3	
6/1/2016	13:15	Fine	Middle	3.5	22.00	22.00	22.25	8.22	8.22	8.24	31.24	31.24	31.24	91.3	91.6	91.1	6.63	6.64	6.60	6.00	6.03	5.97	<2	2.00
	13:17		Middle	3.5	22.50	22.50		8.25	8.25		31.23	31.23		90.9	90.4		6.58	6.54		5.93	5.91		2	
8/1/2016	16:41	Fine	Middle	3.5	20.20	20.20	20.20	8.27	8.27	8.29	31.49	31.49	31.49	80.7	79.6	79.5	6.07	5.99	5.97	3.32	3.31	3.32	2	2.50
	16:43		Middle	3.5	20.20	20.20		8.31	8.31		31.49	31.49		79.0	78.8		5.94	5.89		3.31	3.34		3	
11/1/2016	10:30	Rainy	Middle	3.5	19.60	19.60	19.65	8.37	8.37	8.40	31.45	31.45	31.45	99.5	97.3	97.6	7.57	7.40	7.42	4.90	4.85	4.85	3	2.50
	10:32		Middle	3.5	19.70	19.70		8.42	8.42		31.44	31.44		97.3	96.2		7.40	7.31		4.83	4.82		2	
13/1/2016	10:14	Fine	Middle	3.5	18.90	18.90	18.90	8.36	8.36	8.39	30.99	30.99	31.04	87.5	86.4	86.1	6.77	6.68	6.66	7.18	7.35	7.25	5	5.00
	10:16		Middle	3.5	18.90	18.90		8.42	8.42		31.08	31.08		85.5	85.1		6.61	6.58		7.25	7.22		5	
15/1/2016	11:40	Rainy	Middle	3.5	18.10	18.10	18.10	8.40	8.40	8.42	30.99	30.99	31.01	83.0	81.7	81.1	6.52	6.42	6.38	7.71	7.70	7.71	3	3.00
	11:42		Middle	3.5	18.10	18.10		8.43	8.43		31.02	31.02		80.4	79.5		6.31	6.25		7.70	7.71		3	
18/1/2016	13:44	Fine	Middle	3.0	18.80	18.80	18.80	8.31	8.31	8.34	30.92	30.92	30.92	94.4	94.5	93.9	7.32	7.32	7.28	7.28	7.24	7.33	2	2.50
	13:46		Middle	3.0	18.80	18.80		8.37	8.37		30.92	30.92		93.6	93.2		7.25	7.22		7.35	7.43		3	
20/1/2016	15:43	Cloudy	Middle	3.5	18.10	18.10	18.05	8.48	8.48	8.50	31.26	31.26	31.29	90.1	89.1	88.8	7.07	6.99	6.97	9.12	9.11	<u>9.10</u>	3	3.00
	15:45		Middle	3.5	18.00	18.00		8.52	8.52		31.31	31.31		88.3	87.8		6.92	6.89		9.07	9.08		3	
22/1/2016	16:41	Rainy	Middle	3.5	17.30	17.30	17.30	8.42	8.42	6.45	31.00	31.00	31.02	89.1	87.3	86.4	7.10	6.96	6.88	8.26	8.26	<u>8.23</u>	3	3.00
	16:43		Middle	3.5	17.30	17.30		8.48	0.47		31.04	31.04		85.5	83.6		6.81	6.66		8.22	8.18		3	
25/1/2016	9:35	Fine	Middle	3.5	14.10	14.10	14.00	8.38	8.38	8.41	30.94	30.94	30.95	83.4	82.7	82.5	7.11	7.06	7.03	8.85	8.84	<u>8.85</u>	2	3.00
	9:37		Middle	3.5	13.90	13.90		8.44	8.44		30.96	30.96		82.1	81.7		7.00	6.96		8.85	8.84		4	

Remarks:
Single underline denotes exceedance over Action Level.
Double underline denotes exceedance over Limit Level.



**Water Monitoring Result at WSD19 - Sheung Wan
Mid-Flood Tide**

Date	Time	Weather Condition	Sampling Depth		Water Temperature			pH			Salinity			DO Saturation			DO		Turbidity		Suspended Solids			
					°C			-			ppt			%			mg/L		NTU		mg/L			
			m	Value	Average	Value	Average	Value	Average	Value	Average	Value	Average	Value	Average	Value	Average	Value	Average	Value	Average	Value	Average	
28/12/2015	8:21	Fine	Middle	3.5	19.00	19.00	19.00	8.19	8.19	8.22	32.25	32.25	32.26	85.5	85.3	85.6	6.54	6.53	6.55	8.14	8.14	<u>8.14</u>	7	7.50
	8:23		Middle	3.5	19.00	19.00		8.25	8.25		32.26	32.26		86.5	85.0		6.62	6.51		8.14	8.14		8	
30/12/2015	7:56	Fine	Middle	3.5	19.00	19.00	18.90	8.15	8.15	8.18	31.88	31.88	31.93	72.9	73.3	73.7	5.60	5.66	5.68	8.85	8.82	<u>8.81</u>	7	6.50
	7:58		Middle	3.5	18.80	18.80		8.20	8.20		31.48	32.48		74.3	74.3		5.72	5.72		8.80	8.78		6	
2/1/2016	9:10	Fine	Middle	3.5	19.40	19.40	19.40	8.32	8.32	8.33	31.91	31.91	31.91	81.5	80.5	80.3	6.20	6.13	6.11	6.91	6.98	6.99	4	4.00
	9:12		Middle	3.5	19.40	19.40		8.33	8.33		31.91	31.91		80.0	79.1		6.09	6.02		6.94	7.13		4	
4/1/2016	13:21	Fine	Middle	3.5	21.00	21.00	21.20	8.17	8.17	8.20	31.85	31.85	31.82	90.8	92.8	92.4	6.68	6.84	6.80	6.17	6.14	6.12	2	2.50
	13:23		Middle	3.5	21.40	21.40		8.23	8.23		31.79	31.79		93.5	92.3		6.89	6.80		6.14	6.02		3	
6/1/2016	14:30	Fine	Middle	3.5	21.60	21.60	21.85	8.12	8.12	8.17	31.39	31.39	31.37	99.4	98.2	97.9	7.24	7.16	7.13	5.46	5.43	5.45	5	4.50
	14:32		Middle	3.5	22.10	22.10		8.21	8.21		31.35	31.35		97.3	96.5		7.09	7.03		5.33	5.59		4	
8/1/2016	14:25	Fine	Middle	3.5	20.80	20.80	20.95	8.21	8.21	8.24	31.28	31.28	31.28	97.9	98.2	97.7	7.28	7.29	7.26	6.09	6.28	6.19	2	2.00
	14:27		Middle	3.5	21.10	21.10		8.27	8.27		31.28	31.28		98.2	96.6		7.29	7.16		6.22	6.17		2	
11/1/2016	7:25	Rainy	Middle	3.5	19.00	19.00	19.00	8.30	8.30	8.32	31.47	31.47	31.47	82.4	85.5	84.4	6.34	6.58	6.50	5.30	5.31	5.35	4	4.50
	7:27		Middle	3.5	19.00	19.00		8.34	8.34		31.47	31.47		85.5	84.3		6.58	6.49		5.37	5.43		5	
13/1/2016	8:52	Fine	Middle	3.5	18.10	18.10	18.10	8.25	8.25	8.28	30.98	30.98	30.99	78.3	77.8	77.3	6.15	6.10	6.06	5.98	5.93	5.94	4	4.00
	8:54		Middle	3.5	18.10	18.10		8.30	8.30		31.00	31.00		76.9	76.2		6.03	5.97		5.91	5.92		4	
15/1/2016	10:12	Rainy	Middle	3.5	17.80	17.80	17.80	8.29	8.29	8.31	30.96	30.96	30.97	82.6	82.3	81.9	6.52	6.50	6.47	6.80	6.89	6.87	4	5.00
	10:14		Middle	3.5	17.80	17.80		8.32	8.32		30.97	30.97		81.7	80.9		6.45	6.39		6.89	6.89		6	
18/1/2016	10:34	Fine	Middle	3.5	18.30	18.30	18.25	8.34	8.34	8.38	31.01	31.01	31.02	99.4	98.9	97.1	7.77	7.74	7.59	8.13	8.11	<u>8.10</u>	4	4.00
	10:36		Middle	3.5	18.20	18.20		8.41	8.41		31.02	31.02		96.3	93.7		7.53	7.33		8.09	8.08		4	
20/1/2016	14:30	Cloudy	Middle	3.5	18.00	18.00	18.00	8.01	8.01	8.16	31.28	31.28	31.30	105.6	104.2	103.2	8.31	8.20	8.12	8.30	8.32	<u>8.35</u>	5	4.50
	14:32		Middle	3.5	18.00	18.00		8.31	8.31		31.31	31.31		102.2	100.9		8.05	7.93		8.39	8.38		4	
22/1/2016	15:14	Rainy	Middle	3.5	17.70	17.70	17.65	8.07	8.07	8.08	31.25	31.25	31.26	93.5	93.7	92.8	7.39	7.41	7.34	6.90	6.97	6.98	3	2.50
	15:16		Middle	3.5	17.60	17.60		8.08	8.08		31.26	31.26		91.7	92.2		7.25	7.29		6.99	7.06		2	
25/1/2016	7:34	Fine	Middle	3.5	13.80	13.80	13.55	8.12	8.12	8.18	30.68	30.68	31.00	77.6	77.7	77.7	6.67	6.69	6.69	8.80	8.80	<u>8.79</u>	5	4.50
	7:37		Middle	3.5	13.30	13.30		8.23	8.23		31.32	31.32		77.9	77.7		6.71	6.70		8.79	8.78		4	

Remarks:
Single underline denotes exceedance over Action Level.
Double underline denotes exceedance over Limit Level.



**Water Monitoring Result at C7 - Windsor House
Mid-Ebb Tide**

Date	Time	Weather Condition	Sampling Depth		Water Temperature		pH			Salinity		DO Saturation		DO		Turbidity		Suspended Solids						
					°C		-		ppt		%		mg/L		NTU		mg/L							
					Value	Average	Value	Average	Value	Average	Value	Average	Value	Average	Value	Average	Value	Average						
28/12/2015	2:40	Cloudy	Middle	-	18.40	18.60	18.55	8.32	8.32	8.33	32.38	32.38	32.38	78.4	77.9	78.1	6.05	6.03	6.03	3.03	3.01	2.97	<2	<2
	2:41		Middle	-	18.60	18.60		8.33	8.33		32.38	32.38		78.0	77.9		6.03	6.02		2.95	2.90			
30/12/2015	1:25	Cloudy	Middle	-	19.10	19.10	19.05	8.32	8.32	8.33	32.32	32.32	32.33	74.4	77.4	76.7	5.72	5.92	5.87	23.77	23.40	<u>23.42</u>	3	3.00
	1:26		Middle	-	19.00	19.00		8.34	8.34		32.34	32.34		77.8	77.1		5.95	5.90		23.27	23.23		3	
2/1/2016	5:35	Fine	Middle	-	19.70	19.70	19.70	8.01	8.01	8.01	31.79	31.79	31.79	92.9	92.7	92.4	7.05	7.03	7.01	8.92	8.72	8.89	3	4.00
	5:37		Middle	-	19.70	19.70		8.01	8.01		31.78	31.78		91.8	92.0		6.96	6.98		9.02	8.90		5	
4/1/2016	18:15	Cloudy	Middle	-	20.80	20.80	20.80	8.29	8.29	8.30	23.75	23.74	23.75	81.4	81.0	81.7	6.34	6.32	6.37	3.07	3.12	3.04	<2	<2
	18:16		Middle	-	20.80	20.80		8.31	8.31		23.75	23.75		81.9	82.5		6.38	6.43		3.01	2.97			
6/1/2016	19:18	Fine	Middle	-	21.10	21.10	21.10	8.08	8.08	8.10	20.89	20.89	20.89	76.0	78.8	78.5	5.98	6.19	6.18	3.43	3.53	3.50	<2	2.00
	19:19		Middle	-	21.10	21.10		8.12	8.12		20.89	20.89		79.8	79.4		6.28	6.25		3.55	3.50		2	
8/1/2016	1:30	Cloudy	Middle	-	19.10	19.10	19.10	8.19	8.19	8.19	31.45	31.45	31.45	78.0	78.1	77.7	5.99	6.00	5.97	2.03	2.06	2.04	<2	<2
	1:31		Middle	-	19.10	19.10		8.20	8.19		31.45	31.45		77.8	77.0		5.97	5.90		2.08	2.00			
11/1/2016	2:12	Cloudy	Middle	-	18.70	18.70	18.70	8.30	8.30	8.33	31.57	31.57	31.58	78.6	78.9	78.6	6.08	6.10	6.10	2.10	2.07	2.10	2	2.50
	2:13		Middle	-	18.70	18.70		8.36	8.36		31.58	31.58		78.3	78.4		6.06	6.14		2.09	2.14		3	
13/1/2016	16:21	Fine	Middle	-	19.90	19.90	19.90	8.37	8.37	8.38	30.82	30.82	30.82	73.6	72.9	72.7	5.58	5.54	5.52	5.36	5.34	5.34	4	4.50
	16:23		Middle	-	19.90	19.90		8.38	8.38		30.81	30.81		72.4	72.0		5.50	5.46		5.34	5.33		5	
15/1/2016	16:27	Rainy	Middle	-	18.60	18.60	18.45	8.39	8.39	8.41	30.35	30.35	30.35	88.9	86.7	87.3	6.86	6.79	6.81	7.11	7.09	7.09	2	2.50
	16:29		Middle	-	18.30	18.30		8.42	8.42		30.35	30.35		87.0	86.5		6.82	6.78		7.08	7.08		3	
18/1/2016	17:42	Cloudy	Middle	-	18.10	18.10	18.05	8.41	8.41	8.42	30.80	30.80	30.81	82.9	83.3	82.9	6.54	6.58	6.54	2.04	2.07	2.04	3	3.50
	17:43		Middle	-	18.00	18.00		8.42	8.42		30.82	30.82		82.8	82.6		6.53	6.52		2.02	2.04		4	
20/1/2016	19:17	Cloudy	Middle	-	17.80	17.80	17.75	8.13	8.13	8.16	31.03	31.03	31.04	79.7	81.1	80.0	6.30	6.42	6.33	2.94	2.91	2.89	2	2.00
	19:18		Middle	-	17.70	17.70		8.18	8.18		31.05	31.05		80.7	78.6		6.39	6.22		2.85	2.87		<2	
22/1/2016	23:01	Cloudy	Middle	-	16.00	16.00	16.00	8.43	8.43	8.44	31.21	31.21	31.15	80.3	80.3	80.4	6.56	6.56	6.57	2.52	2.53	2.56	3	3.00
	23:02		Middle	-	16.00	16.00		8.44	8.44		31.08	31.08		80.5	80.6		6.58	6.59		2.58	2.61		3	
25/1/2016	1:30	Fine	Middle	-	10.00	10.00	9.95	8.50	8.50	8.52	31.29	31.29	31.28	81.6	81.8	81.9	7.56	7.58	7.59	3.48	3.40	3.41	<2	<2
	1:31		Middle	-	9.80	10.00		8.53	8.53		31.26	31.26		82.0	82.0		7.60	7.60		3.38	3.36		<2	

Remarks:
Single underline denotes exceedance over Action Level.
Double underline denotes exceedance over Limit Level.



**Water Monitoring Result at C1 - HKCEC
Mid-Ebb Tide**

Date	Time	Weather Condition	Sampling Depth	m	Water Temperature		Average	pH		Average	Salinity		Average	DO Saturation		Average	DO		Average	Turbidity		Average	Suspended Solids		Average
					°C			-			ppt			%			mg/L			NTU			mg/L		
					Value	Value		Value	Value		Value	Value		Value	Value		Value	Value		Value	Value		Value	Value	
28/12/2015	4:53	Cloudy	Middle	2.0	18.90	18.90	18.90	8.12	8.12	8.14	31.95	31.95	31.96	71.4	72.0	72.0	5.49	5.54	5.54	6.50	6.44	6.43	5	4.50	
	4:54		Middle	2.0	18.90	18.90		8.15	8.15		31.97	31.97		72.5	72.0		5.57	5.54		6.41	6.36		4		
30/12/2015	0:40	Cloudy	Middle	2.5	18.30	18.30	18.30	8.49	8.49	8.49	32.43	32.43	32.43	76.3	76.9	77.0	5.91	5.97	5.97	3.82	3.86	3.82	4	4.00	
	0:41		Middle	2.5	18.30	18.30		8.49	8.49		32.43	32.43		77.5	77.4		6.00	6.00		3.84	3.77		4		
2/1/2016	5:05	Fine	Middle	3.0	19.20	19.20	19.15	8.41	8.41	8.41	32.15	32.15	32.15	87.6	88.3	87.6	6.69	6.75	6.70	5.18	5.14	5.14	<2	<2	
	5:07		Middle	3.0	19.10	19.10		8.41	8.41		32.15	32.15		87.2	87.4		6.69	6.68		5.12	5.11		<2		
4/1/2016	19:45	Cloudy	Middle	2.5	20.30	20.30	20.30	8.39	8.39	8.39	32.09	32.09	32.09	81.1	80.6	80.9	6.07	6.03	6.06	2.04	1.85	1.87	3	3.00	
	19:46		Middle	2.5	20.30	20.30		8.40	8.39		32.09	32.09		80.8	81.1		6.06	6.06		1.79	1.81		3		
6/1/2016	20:15	Fine	Middle	2.5	20.40	20.40	20.50	8.27	8.27	8.28	31.67	31.67	31.67	79.7	79.5	80.0	5.94	5.93	5.96	1.29	1.31	1.32	3	3.00	
	20:16		Middle	2.5	20.60	20.60		8.29	8.29		31.67	31.67		80.3	80.4		5.98	5.99		1.33	1.35		3		
8/1/2016	2:58	Cloudy	Middle	2.0	18.90	18.90	18.90	8.00	8.00	8.03	30.55	30.55	30.56	72.6	73.8	73.4	5.62	5.72	5.68	2.40	2.53	2.53	4	3.50	
	2:59		Middle	2.0	18.90	18.90		8.06	8.06		30.57	30.57		73.5	73.7		5.67	5.71		2.57	2.61		3		
11/1/2016	3:47	Cloudy	Middle	2.0	18.70	18.70	18.70	8.47	8.47	8.48	30.84	30.84	30.84	77.7	78.1	77.9	6.03	6.06	6.05	2.25	2.52	2.35	3	3.00	
	3:48		Middle	2.0	18.70	18.70		8.48	8.48		30.84	30.84		78.1	77.8		6.06	6.04		2.43	2.19		3		
13/1/2016	15:30	Fine	Middle	2.5	19.10	9.10	14.10	8.48	8.48	8.48	31.33	31.33	31.34	79.3	81.4	81.4	6.09	6.26	6.25	5.75	5.75	5.78	3	3.00	
	15:32		Middle	2.5	19.10	9.10		8.48	8.48		31.34	31.34		82.2	82.6		6.31	6.35		5.81	5.79		3		
15/1/2016	18:09	Rainy	Middle	2.5	18.30	18.30	18.30	8.47	8.47	8.47	31.01	31.01	31.02	84.1	82.2	83.9	6.56	6.42	6.55	5.89	5.82	5.87	2	3.00	
	18:11		Middle	2.5	18.30	18.30		8.48	8.47		31.03	31.03		83.6	85.5		6.53	6.68		5.87	5.88		4		
18/1/2016	20:52	Cloudy	Middle	2.5	18.10	18.10	18.10	8.45	8.45	8.46	31.22	31.22	31.23	80.7	80.4	81.0	6.32	6.30	6.35	2.05	2.11	1.96	3	3.50	
	20:53		Middle	2.5	18.10	18.10		8.48	8.47		31.23	31.23		80.8	81.9		6.34	6.43		1.91	1.77		4		
20/1/2016	20:40	Cloudy	Middle	2.5	17.70	17.70	17.65	8.39	8.39	8.40	31.43	31.43	31.44	80.3	83.6	83.1	6.35	6.61	6.58	2.16	2.04	2.17	2	2.50	
	20:41		Middle	2.5	17.60	17.60		8.41	8.39		31.44	31.44		84.7	83.9		6.70	6.64		2.20	2.26		3		
22/1/2016	0:55	Cloudy	Middle	2.0	16.40	16.40	16.35	8.51	8.51	8.51	31.44	31.44	31.45	80.8	80.9	80.8	6.54	6.55	6.54	2.67	2.88	2.74	3	3.00	
	0:56		Middle	2.0	16.30	16.30		8.51	8.51		31.45	31.45		81.0	80.6		6.55	6.53		2.69	2.72		3		
25/1/2016	3:31	Fine	Middle	2.0	11.10	11.10	11.00	8.36	8.37	8.41	31.22	31.22	31.26	79.4	81.0	80.5	7.19	7.33	7.29	3.00	2.96	2.95	4	4.00	
	3:32		Middle	2.0	10.90	10.90		8.46	8.46		31.30	31.30		80.8	80.8		7.32	7.32		2.92	2.90		4		

Remarks:
Single underline denotes exceedance over Action Level.
Double underline denotes exceedance over Limit Level.



**Water Monitoring Result at P1 - HKCEC Phase I
Mid-Ebb Tide**

Date	Time	Weather Condition	Sampling Depth		Water Temperature		pH			Salinity		DO Saturation		DO		Turbidity		Suspended Solids						
					°C		-		ppt		%		mg/L		NTU		mg/L							
			m	Value	Average	Value	Average	Value	Average	Value	Average	Value	Average	Value	Average	Value	Average	Value	Average					
28/12/2015	4:25	Cloudy	Middle	2.0	18.70	18.70	18.70	8.32	8.32	8.34	32.09	32.09	32.09	74.8	75.3	75.1	5.77	5.80	5.79	3.45	3.49	3.44	4	5.00
	4:26		Middle	2.0	18.70	18.70		8.35	8.35		32.09	32.09		75.2	75.0		5.80	5.78		3.51	3.31		6	
30/12/2015	0:15	Cloudy	Middle	2.5	18.40	18.40	18.40	8.48	8.48	8.48	32.43	32.43	32.43	77.2	77.3	77.3	5.98	5.99	5.99	3.56	3.67	3.61	3	3.00
	0:16		Middle	2.5	18.40	18.40		8.48	8.48		32.43	32.43		77.8	77.0		6.03	5.96		3.69	3.52		3	
2/1/2016	4:45	Fine	Middle	3.0	19.00	19.00	19.00	8.34	8.34	8.37	32.15	32.15	32.15	95.3	95.4	95.0	7.30	7.31	7.28	5.15	5.14	5.16	<2	<2
	4:47		Middle	3.0	19.00	19.00		8.39	8.39		32.15	32.15		94.6	94.6		7.25	7.25		5.16	5.18		<2	
4/1/2016	19:20	Cloudy	Middle	2.5	20.50	20.50	20.55	8.34	8.34	8.35	32.08	32.08	32.08	80.5	80.9	80.7	5.99	6.02	6.00	1.55	1.59	1.58	<2	<2
	19:21		Middle	2.5	20.60	20.60		8.35	8.35		32.08	32.08		80.6	80.8		5.99	6.01		1.61	1.57		<2	
6/1/2016	19:48	Fine	Middle	2.5	20.30	20.30	20.35	8.34	8.34	8.34	31.71	31.71	31.71	81.5	81.8	81.5	6.10	6.12	6.10	3.09	3.01	3.00	2	2.00
	19:49		Middle	2.5	20.40	20.40		8.34	8.34		31.71	31.71		81.2	81.5		6.07	6.09		2.98	2.90		2	
8/1/2016	2:35	Cloudy	Middle	2.0	18.60	18.60	18.65	8.41	8.41	8.41	31.49	31.49	31.49	77.7	78.3	77.8	6.02	6.03	6.01	2.15	2.08	2.32	3	2.50
	2:36		Middle	2.0	18.70	18.70		8.41	8.41		31.49	31.49		77.4	77.6		5.99	6.01		2.05	2.98		2	
11/1/2016	3:21	Cloudy	Middle	2.0	18.50	18.50	18.50	8.47	8.47	8.47	31.38	31.38	31.39	78.1	78.6	78.6	6.07	6.11	6.11	1.79	1.87	1.87	2	2.00
	3:22		Middle	2.0	18.50	18.50		8.47	8.47		31.39	31.39		78.7	78.9		6.11	6.13		1.89	1.91		<2	
13/1/2016	15:14	Fine	Middle	2.5	19.10	19.10	19.15	8.39	8.39	8.41	31.41	31.41	31.46	90.8	89.0	89.0	6.97	6.83	6.83	5.22	5.27	5.27	<2	<2
	15:16		Middle	2.5	19.20	19.20		8.42	8.42		31.50	31.53		88.6	87.5		6.79	6.71		5.29	5.30		<2	
15/1/2016	17:53	Rainy	Middle	2.5	17.50	17.50	17.50	8.35	8.35	8.38	30.91	30.91	30.94	84.0	82.4	82.0	6.67	6.04	6.38	7.30	7.05	7.12	4	3.50
	17:55		Middle	2.5	17.50	17.50		8.41	8.41		30.96	30.96		81.2	80.3		6.45	6.36		7.08	7.06		3	
18/1/2016	20:25	Cloudy	Middle	2.5	17.80	17.80	17.75	8.52	8.52	8.53	31.20	31.20	31.20	84.2	84.6	84.4	6.65	6.68	6.67	1.37	1.30	1.33	2	2.50
	20:26		Middle	2.5	17.70	17.70		8.53	8.53		31.20	31.20		84.5	84.3		6.67	6.66		1.28	1.35		3	
20/1/2016	20:13	Cloudy	Middle	2.5	17.30	17.30	17.30	8.51	8.51	8.53	31.51	31.51	31.51	84.9	84.7	84.9	6.74	6.73	6.74	3.09	3.06	3.04	3	4.00
	20:14		Middle	2.5	17.30	17.30		8.54	8.54		31.50	31.50		84.9	84.9		6.74	6.74		3.03	2.96		5	
22/1/2016	0:30	Cloudy	Middle	2.0	15.20	15.20	15.20	8.55	8.55	8.55	31.47	31.47	31.47	82.9	82.8	82.6	6.85	6.84	6.82	3.01	3.04	3.03	3	3.00
	0:31		Middle	2.0	15.20	15.20		8.55	8.55		31.47	31.47		82.5	82.1		6.82	6.78		3.06	3.02		3	
25/1/2016	2:55	Fine	Middle	2.0	10.00	10.00	9.95	8.52	8.52	8.54	31.58	31.58	31.58	83.9	84.0	84.1	7.75	7.76	7.77	2.87	2.84	2.82	4	3.50
	2:56		Middle	2.0	9.90	9.90		8.56	8.56		31.57	31.57		84.1	84.2		7.77	7.78		2.76	2.80		3	

Remarks:
Single underline denotes exceedance over Action Level.
Double underline denotes exceedance over Limit Level.



**Water Monitoring Result at P3 - APA
Mid-Ebb Tide**

Date	Time	Weather Condition	Sampling Depth	Water Temperature		pH		Salinity		DO Saturation		DO		Turbidity		Suspended Solids								
				°C		-		ppt		%		mg/L		NTU		mg/L								
				Value	Average	Value	Average	Value	Average	Value	Average	Value	Average	Value	Average	Value	Average							
28/12/2015	4:32	Cloudy	Middle	2.0	18.70	18.70	18.70	8.37	8.37	8.38	32.20	32.20	32.20	74.0	74.7	74.3	5.71	5.76	5.73	3.86	3.81	3.79	3	3.50
	4:33		Middle	2.0	18.70	18.70	18.70	8.38	8.38	8.38	32.20	32.20	32.20	74.6	74.0	74.3	5.75	5.70	5.73	3.76	3.74	3.79	4	3.50
30/12/2015	0:19	Cloudy	Middle	2.5	18.30	18.30	18.30	8.46	8.46	8.47	32.43	32.43	32.43	74.2	74.5	74.9	5.75	5.77	5.80	4.34	4.20	4.18	3	3.00
	0:02		Middle	2.5	18.30	18.30	18.30	8.47	8.47	8.47	32.43	32.43	32.43	75.4	75.5	75.9	5.84	5.85	5.84	4.10	4.08	4.09	3	3.00
2/1/2016	4:50	Fine	Middle	3.0	19.00	19.00	19.00	8.40	8.40	8.41	32.17	32.17	32.17	92.7	92.7	92.5	7.10	7.10	7.09	5.22	5.22	5.21	<2	<2
	4:52		Middle	3.0	19.00	19.00	19.00	8.41	8.41	8.41	32.17	32.17	32.17	92.5	92.0	92.5	7.09	7.05	7.07	5.21	5.20	5.21	<2	<2
4/1/2016	19:24	Cloudy	Middle	2.5	20.40	20.40	20.45	8.40	8.40	8.40	32.10	32.10	32.10	78.5	78.6	78.9	5.86	5.87	5.89	2.02	2.01	1.98	<2	2.00
	19:25		Middle	2.5	20.50	20.50	20.45	8.40	8.40	8.40	32.10	32.10	32.10	79.3	79.2	78.9	5.91	5.91	5.89	1.95	1.93	1.94	2	2.00
6/1/2016	19:52	Fine	Middle	2.5	20.20	20.20	20.30	8.36	8.36	8.37	31.72	31.72	31.72	80.6	80.9	80.6	6.04	6.06	6.04	1.40	1.36	1.39	3	3.00
	19:53		Middle	2.5	20.40	20.40	20.30	8.37	8.37	8.37	31.72	31.72	31.72	80.9	80.0	80.6	6.05	5.99	6.02	1.38	1.42	1.40	3	3.00
8/1/2016	2:40	Cloudy	Middle	2.0	18.70	18.70	18.70	8.42	8.42	8.43	31.36	31.36	31.36	76.3	76.6	76.6	5.90	5.93	5.93	1.89	1.93	1.83	<2	2.00
	2:41		Middle	2.0	18.70	18.70	18.70	8.43	8.43	8.43	31.36	31.36	31.36	76.6	76.8	76.6	5.92	5.95	5.93	1.78	1.72	1.75	2	2.00
11/1/2016	3:26	Cloudy	Middle	2.0	18.70	18.70	18.70	8.46	8.46	8.46	31.42	31.42	31.42	80.3	80.4	80.5	6.22	6.23	6.24	2.08	2.05	2.04	2	2.50
	3:27		Middle	2.0	18.70	18.70	18.70	8.46	8.46	8.46	31.41	31.42	31.42	80.6	80.8	80.5	6.25	6.26	6.24	2.03	2.00	2.01	3	2.50
13/1/2016	15:18	Fine	Middle	2.5	19.10	19.10	19.05	8.43	8.43	8.45	31.10	31.10	31.20	87.3	86.0	85.5	6.74	6.63	6.59	5.76	5.80	5.77	3	2.50
	15:20		Middle	2.5	19.00	19.00	19.05	8.46	8.46	8.45	31.30	31.30	31.20	84.7	83.8	85.5	6.54	6.46	6.50	5.76	5.76	5.76	2	2.50
15/1/2016	17:57	Rainy	Middle	2.5	17.70	17.70	17.70	8.43	8.43	8.44	30.94	30.94	30.94	83.0	81.5	80.9	6.57	6.45	6.41	5.79	5.83	5.84	2	2.00
	17:59		Middle	2.5	17.70	17.70	17.70	8.44	8.44	8.44	30.93	30.93	30.94	80.1	79.0	80.9	6.34	6.26	6.30	5.84	5.88	5.86	2	2.00
18/1/2016	20:32	Cloudy	Middle	2.5	17.90	17.90	17.85	8.55	8.55	8.56	31.19	31.19	31.20	83.0	83.5	83.2	6.54	6.58	6.56	1.55	1.53	1.48	2	2.00
	20:33		Middle	2.5	17.80	17.80	17.85	8.56	8.56	8.56	31.20	31.20	31.20	83.2	83.1	83.2	6.56	6.55	6.56	1.46	1.36	1.41	2	2.00
20/1/2016	20:18	Cloudy	Middle	2.5	17.30	17.30	17.30	8.56	8.56	8.56	31.51	31.51	31.51	81.0	80.9	81.7	6.43	6.42	6.49	2.35	2.38	2.42	2	2.50
	20:19		Middle	2.5	17.30	17.30	17.30	8.56	8.56	8.56	31.51	31.51	31.51	82.3	82.7	81.7	6.54	6.57	6.49	2.46	2.49	2.47	3	2.50
22/1/2016	0:37	Cloudy	Middle	2.0	15.30	15.30	15.30	8.57	8.57	8.58	31.50	31.50	31.50	80.8	81.3	81.7	6.58	6.72	6.72	2.77	2.75	2.81	3	3.50
	0:38		Middle	2.0	15.30	15.30	15.30	8.58	8.58	8.58	31.49	31.49	31.50	82.4	82.1	81.7	6.80	6.78	6.79	2.88	2.83	2.85	4	3.50
25/1/2016	3:04	Fine	Middle	2.0	9.60	9.60	9.55	8.59	8.59	8.60	31.58	31.58	31.58	86.2	86.5	86.8	8.03	8.05	8.08	3.85	3.88	3.88	2	3.00
	3:05		Middle	2.0	9.50	9.50	9.55	8.61	8.61	8.60	31.58	31.58	31.58	87.0	87.3	86.8	8.11	8.13	8.08	3.91	3.89	3.90	4	3.00

Remarks:
Single underline denotes exceedance over Action Level.
Double underline denotes exceedance over Limit Level.



**Water Monitoring Result at P4 - SOC
Mid-Ebb Tide**

Date	Time	Weather Condition	Sampling Depth	m	Water Temperature		Average	pH		Average	Salinity		Average	DO Saturation		Average	DO		Average	Turbidity		Average	Suspended Solids		Average
					Value	Value		Value	Value		Value	Value		Value	Value		Value	Value		Value	Value		Value	Value	
					°C	-		ppt	%		mg/L	NTU		mg/L											
28/12/2015	4:40	Cloudy	Middle	2.0	18.50	18.50	18.50	8.41	8.41	8.41	32.20	32.20	32.20	79.0	79.3	79.6	6.11	6.13	6.16	3.97	3.99	4.02	4	4.00	
	4:41		Middle	2.0	18.50	18.50		8.41	8.41		32.20	32.20		79.9	80.1		6.19	6.19		4.05	4.07		4		
30/12/2015	0:25	Cloudy	Middle	2.5	18.30	18.30	18.30	8.37	8.37	8.39	32.29	32.29	32.31	77.9	79.0	78.9	6.04	6.13	6.12	3.65	3.63	3.50	4	3.50	
	0:26		Middle	2.5	18.30	18.30		8.41	8.41		32.33	32.33		79.4	79.2		6.16	6.15		3.37	3.35		3		
2/1/2016	4:55	Fine	Middle	3.0	19.00	19.00	19.00	8.41	8.41	8.41	32.15	32.15	32.16	91.0	91.2	91.0	6.97	6.98	6.97	5.08	5.04	5.04	<2	<2	
	4:57		Middle	3.0	19.00	19.00		8.41	8.41		32.16	32.16		91.0	90.9		6.97	6.96		5.02	5.02		<2		
4/1/2016	19:29	Cloudy	Middle	2.5	20.50	20.50	20.55	8.41	8.41	8.41	32.09	32.09	32.10	80.3	81.6	81.8	5.98	6.07	6.09	2.03	1.79	1.82	<2	<2	
	19:30		Middle	2.5	20.60	20.60		8.41	8.41		32.10	32.10		82.3	83.0		6.12	6.18		1.73	1.72		<2		
6/1/2016	19:58	Fine	Middle	2.5	20.20	20.20	20.25	8.38	8.38	8.38	31.72	31.71	31.71	81.7	82.1	82.1	6.12	6.15	6.15	2.21	2.18	2.22	2	3.00	
	19:59		Middle	2.5	20.30	20.30		8.37	8.37		31.71	31.71		82.4	82.1		6.17	6.15		2.17	2.31		4		
8/1/2016	2:45	Cloudy	Middle	2.0	18.60	18.60	18.60	8.31	8.31	8.33	31.25	31.25	31.25	80.6	81.7	81.2	6.25	6.34	6.29	1.53	1.50	1.49	<2	2.00	
	2:46		Middle	2.0	18.60	18.60		8.34	8.34		31.25	31.25		80.8	81.6		6.25	6.32		1.47	1.45		2		
11/1/2016	3:34	Cloudy	Middle	2.0	18.60	18.60	18.60	8.44	8.44	8.45	31.21	31.21	31.22	82.2	82.5	82.5	6.39	6.41	6.41	3.90	3.61	3.60	3	3.50	
	3:35		Middle	2.0	18.60	18.60		8.45	8.45		31.22	31.22		82.8	82.5		6.43	6.41		3.50	3.40		4		
13/1/2016	15:22	Fine	Middle	2.5	18.60	18.60	18.60	8.48	8.48	8.48	31.35	31.35	31.34	81.0	80.7	80.1	6.28	6.26	6.21	4.82	4.82	4.82	4	3.50	
	15:24		Middle	2.5	18.60	18.60		8.48	8.48		31.33	31.33		79.7	79.1		6.18	6.13		4.82	4.82		3		
15/1/2016	18:01	Rainy	Middle	2.5	18.00	18.00	17.95	8.45	8.45	8.45	30.97	30.97	30.98	82.5	81.3	80.8	6.49	6.40	6.36	7.01	6.98	6.93	2	2.00	
	18:03		Middle	2.5	17.90	17.90		8.45	8.45		30.98	30.98		80.3	79.2		6.32	6.24		6.88	6.85		2		
18/1/2016	20:39	Cloudy	Middle	2.5	17.80	17.80	17.75	8.56	8.56	8.57	31.22	31.22	31.23	83.9	84.7	84.6	6.62	6.68	6.67	1.83	1.80	1.79	5	4.50	
	20:40		Middle	2.5	17.70	17.70		8.57	8.57		31.23	31.23		84.7	84.9		6.68	6.70		1.78	1.75		4		
20/1/2016	20:27	Cloudy	Middle	2.5	17.20	17.20	17.20	8.58	8.58	8.59	31.56	31.56	31.56	85.8	86.5	86.1	6.83	6.89	6.85	2.37	2.39	2.40	3	2.50	
	20:28		Middle	2.5	17.20	17.20		8.59	8.59		31.56	31.56		86.4	85.5		6.88	6.81		2.41	2.43		2		
22/1/2016	0:43	Cloudy	Middle	2.0	15.60	15.60	15.60	8.43	8.43	8.44	31.48	31.47	31.47	83.8	84.0	83.9	6.88	6.90	6.89	3.13	3.10	3.15	2	2.50	
	0:44		Middle	2.0	15.60	15.60		8.45	8.44		31.47	31.47		84.1	83.8		6.91	6.88		3.26	3.12		3		
25/1/2016	3:13	Fine	Middle	2.0	10.70	10.60	10.58	8.64	8.64	8.64	31.57	31.57	31.59	81.1	81.2	81.2	7.39	7.41	7.41	2.55	2.57	2.65	3	2.50	
	3:14		Middle	2.0	10.50	10.50		8.64	8.64		31.60	31.60		81.3	81.1		7.42	7.40		2.70	2.77		2		

Remarks:
Single underline denotes exceedance over Action Level.
Double underline denotes exceedance over Limit Level.



**Water Monitoring Result at P5 - WCT / RT / IT
Mid-Ebb Tide**

Date	Time	Weather Condition	Sampling Depth	Water Temperature		pH		Salinity		DO Saturation		DO		Turbidity		Suspended Solids								
				°C		-		ppt		%		mg/L		NTU		mg/L								
				Value	Average	Value	Average	Value	Average	Value	Average	Value	Average	Value	Average	Value	Average							
28/12/2015	4:46	Cloudy	Middle	2.0	18.80	18.80	18.75	8.42	8.42	8.43	32.17	32.17	32.18	75.2	75.4	75.3	5.80	5.81	5.81	3.94	3.76	3.79	5	4.50
	4:47		Middle	2.0	18.70	18.70	18.75	8.43	8.43	8.43	32.18	32.18	32.18	75.6	75.1	75.3	5.83	5.78	5.81	3.82	3.65	3.79	4	4.50
30/12/2015	0:31	Cloudy	Middle	2.5	18.40	18.40	18.40	8.43	8.43	8.44	32.42	32.42	32.43	78.5	78.4	78.5	6.08	6.07	6.07	3.80	3.88	3.84	4	3.00
	0:32		Middle	2.5	18.40	18.40	18.40	8.44	8.44	8.44	32.43	32.43	32.43	78.6	78.3	78.5	6.08	6.06	6.07	3.85	3.81	3.84	2	3.00
2/1/2016	5:00	Fine	Middle	3.0	19.20	19.20	19.20	8.41	8.41	8.41	32.13	32.13	32.14	89.2	89.8	89.4	6.82	6.89	6.84	4.22	4.05	4.12	<2	<2
	5:02		Middle	3.0	19.20	19.20	19.20	8.41	8.41	8.41	32.15	32.15	32.14	89.5	89.1	89.4	6.84	6.81	6.84	4.08	4.12	4.12	<2	<2
4/1/2016	19:40	Cloudy	Middle	2.5	20.30	20.30	20.35	8.41	8.41	8.41	32.10	32.10	32.10	78.1	78.6	78.2	5.83	5.87	5.83	1.56	1.58	1.56	<2	<2
	19:41		Middle	2.5	20.40	20.40	20.35	8.41	8.41	8.41	32.10	32.10	32.10	78.0	77.9	78.2	5.80	5.80	5.83	1.55	1.53	1.56	<2	<2
6/1/2016	20:07	Fine	Middle	2.5	20.20	20.20	20.25	8.38	8.38	8.38	31.73	31.73	31.72	77.9	78.3	78.1	5.84	5.87	5.85	2.40	2.46	2.31	3	2.50
	20:08		Middle	2.5	20.30	20.30	20.25	8.38	8.38	8.38	31.71	31.71	31.72	78.4	77.6	78.1	5.87	5.81	5.85	2.19	2.17	2.31	2	2.50
8/1/2016	2:51	Cloudy	Middle	2.0	18.70	18.70	18.75	8.42	8.42	8.43	31.17	31.15	31.16	72.7	73.3	73.1	5.63	5.67	5.63	2.32	2.26	2.22	2	2.00
	2:52		Middle	2.0	18.80	18.80	18.75	8.42	8.45	8.43	31.18	31.15	31.16	74.3	72.0	73.1	5.65	5.57	5.63	2.18	2.12	2.22	2	2.00
11/1/2016	3:40	Cloudy	Middle	2.0	18.70	18.70	18.70	8.49	8.49	8.49	30.00	30.00	30.00	76.7	6.9	59.1	5.99	6.00	5.98	3.12	3.10	3.02	3	3.00
	3:41		Middle	2.0	18.70	18.70	18.70	8.48	8.48	8.49	30.00	30.00	30.00	76.3	76.5	59.1	5.95	5.97	5.98	3.00	2.87	3.02	3	3.00
13/1/2016	15:26	Fine	Middle	2.5	18.90	18.90	18.90	8.48	8.48	8.48	31.33	31.33	31.33	84.3	84.0	83.7	6.50	6.48	6.45	6.06	6.07	6.08	2	2.00
	15:28		Middle	2.5	18.90	18.90	18.90	8.48	8.48	8.48	31.32	31.32	31.33	83.4	82.9	83.7	6.43	6.39	6.45	6.09	6.10	6.08	2	2.00
15/1/2016	18:05	Rainy	Middle	2.5	18.00	18.00	18.10	8.45	8.45	8.46	30.99	30.99	31.01	83.8	82.9	82.6	6.57	6.50	6.47	6.50	6.61	6.54	2	2.00
	18:07		Middle	2.5	18.20	18.20	18.10	8.46	8.46	8.46	31.03	31.03	31.01	82.0	81.6	82.6	6.42	6.39	6.47	6.54	6.50	6.54	2	2.00
18/1/2016	20:47	Cloudy	Middle	2.5	18.10	18.10	18.10	8.56	8.56	8.57	31.20	31.20	31.21	80.4	80.3	80.8	6.30	6.29	6.33	1.65	1.70	1.73	4	3.50
	20:48		Middle	2.5	18.10	18.10	18.10	8.57	8.57	8.57	31.21	31.21	31.21	80.9	81.5	80.8	6.34	6.39	6.33	1.72	1.83	1.73	3	3.50
20/1/2016	20:33	Cloudy	Middle	2.5	17.50	17.50	17.50	8.59	8.59	8.60	31.59	31.59	31.59	84.2	84.6	84.0	6.66	6.69	6.64	2.14	2.10	2.12	3	2.50
	20:34		Middle	2.5	17.50	17.50	17.50	8.60	8.60	8.60	31.59	31.59	31.59	84.1	83.0	84.0	6.66	6.56	6.64	2.09	2.13	2.12	2	2.50
22/1/2016	0:50	Cloudy	Middle	2.0	15.90	15.90	15.90	8.26	8.26	8.29	31.14	31.14	31.14	84.5	84.8	84.6	6.92	6.93	6.92	3.12	3.10	3.08	4	4.00
	0:51		Middle	2.0	15.90	15.90	15.90	8.31	8.31	8.29	31.14	31.14	31.14	84.7	84.5	84.6	6.93	6.91	6.92	3.05	3.05	3.08	4	4.00
25/1/2016	3:22	Fine	Middle	2.0	10.80	10.80	10.65	8.62	8.62	8.63	31.60	31.60	31.60	80.9	79.1	79.6	7.36	7.20	7.25	3.60	3.62	3.64	4	3.00
	3:23		Middle	2.0	10.50	10.50	10.65	8.63	8.63	8.63	31.60	31.60	31.60	78.8	79.7	79.6	7.19	7.26	7.25	3.69	3.64	3.64	2	3.00

Remarks:
Single underline denotes exceedance over Action Level.
Double underline denotes exceedance over Limit Level.



**Water Monitoring Result at RW21-P789 - Sun Hung Kai Centre
Mid-Ebb Tide**

Date	Time	Weather Condition	Sampling Depth		Water Temperature			pH			Salinity			DO Saturation			DO			Turbidity			Suspended Solids	
					°C		-		ppt		%		mg/L		NTU		mg/L							
			m	Value	Average	Value	Average	Value	Average	Value	Average	Value	Average	Value	Average	Value	Average	Value	Average	Value	Average	Value	Average	
28/12/2015	3:45	Cloudy	Middle	3.0	18.40	18.40	18.35	8.25	8.25	8.27	31.44	31.44	31.46	72.7	72.9	72.6	5.66	5.68	5.66	2.77	2.80	2.87	4	4.50
	3:46		Middle	3.0	18.30	18.30		8.28	8.28		31.47	31.47		72.6	72.3		5.65	5.64		2.92	2.98		5	
30/12/2015	0:57	Cloudy	Middle	3.5	18.70	18.70	18.70	8.40	8.40	8.41	32.45	32.45	32.45	75.6	76.5	76.4	5.84	5.89	5.88	2.39	2.45	2.38	2	2.00
	0:58		Middle	3.5	18.70	18.70		8.41	8.41		32.45	32.45		76.8	76.5		5.91	5.89		2.44	2.23		2	
2/1/2016	5:13	Fine	Middle	3.5	19.30	19.30	19.30	8.40	8.40	8.41	32.12	32.12	32.13	85.9	84.5	84.6	6.54	6.44	6.44	4.52	4.46	4.46	<2	<u>≤2</u>
	5:15		Middle	3.5	19.30	19.30		8.41	8.41		32.14	32.14		83.6	84.2		6.37	6.41		4.43	4.41		<2	
4/1/2016	18:37	Cloudy	Middle	3.5	20.40	20.40	20.40	8.21	8.21	8.23	31.78	31.78	31.81	76.7	76.9	77.1	5.73	5.76	5.76	1.60	1.77	1.63	<2	<u>≤2</u>
	18:38		Middle	3.5	20.40	20.40		8.24	8.24		31.83	31.83		77.4	77.4		5.78	5.78		1.73	1.43		<2	
6/1/2016	18:58	Fine	Middle	3.5	21.50	21.50	21.40	8.10	8.10	8.13	31.37	31.37	31.48	80.0	80.5	80.4	5.89	5.92	5.92	2.08	2.01	2.10	2	2.00
	18:59		Middle	3.5	21.30	21.30		8.15	8.15		31.59	31.59		80.8	80.3		5.94	5.91		2.14	2.18		2	
8/1/2016	2:10	Cloudy	Middle	3.0	19.00	19.00	19.00	8.29	8.29	8.30	30.83	30.83	30.82	71.1	72.5	72.0	5.49	5.60	5.56	2.93	2.77	2.78	3	2.50
	2:11		Middle	3.0	19.00	19.00		8.30	8.30		30.81	30.81		73.0	71.4		5.65	5.51		2.72	2.69		2	
11/1/2016	2:52	Cloudy	Middle	3.0	18.60	18.60	18.65	8.21	8.21	8.24	30.57	30.57	30.59	79.9	80.0	80.0	6.22	6.23	6.23	5.57	5.16	5.24	3	3.50
	2:53		Middle	3.0	18.70	18.70		8.26	8.26		30.61	30.61		80.0	80.2		6.23	6.24		5.13	5.11		4	
13/1/2016	15:50	Fine	Middle	3.5	19.40	19.40	19.40	8.42	8.42	8.44	31.36	31.36	31.36	88.0	86.4	85.1	6.73	6.61	6.51	5.33	5.36	5.35	<2	<u>≤2</u>
	15:52		Middle	3.5	19.40	19.40		8.45	8.45		31.36	31.36		83.6	82.5		6.39	6.30		5.34	5.37		<2	
15/1/2016	18:26	Rainy	Middle	3.5	18.20	18.20	18.20	8.43	8.43	8.44	30.56	30.56	30.57	79.0	79.2	81.1	6.21	6.23	6.38	8.97	8.95	<u>8.94</u>	5	5.50
	18:28		Middle	3.5	18.20	18.20		8.45	8.45		30.57	30.57		82.5	83.6		6.49	6.57		8.93	8.92		6	
18/1/2016	18:15	Cloudy	Middle	3.5	17.50	17.50	17.50	8.31	8.31	8.32	31.27	31.27	31.50	82.2	83.0	83.2	6.52	6.69	6.63	2.19	2.00	1.97	<2	<u>≤2</u>
	18:16		Middle	3.5	17.50	17.50		8.32	8.32		31.26	32.18		83.8	83.7		6.66	6.65		1.93	1.76		<2	
20/1/2016	19:36	Cloudy	Middle	3.5	17.70	17.70	17.65	8.48	8.48	8.50	31.51	31.51	31.53	88.8	88.9	88.5	7.01	7.02	6.99	2.28	2.35	2.44	<2	<u>≤2</u>
	19:37		Middle	3.5	17.60	17.60		8.53	8.49		31.54	31.54		88.5	87.9		6.99	6.94		2.56	2.58		<2	
22/1/2016	23:51	Cloudy	Middle	3.5	15.80	15.80	15.80	8.52	8.52	8.53	31.40	31.40	31.40	79.1	79.8	79.6	6.48	6.53	6.52	2.62	2.64	2.52	2	2.00
	23:52		Middle	3.5	15.80	15.80		8.53	8.53		31.40	31.40		79.9	79.6		6.55	6.51		2.55	2.25		2	
25/1/2016	2:15	Fine	Middle	3.0	10.70	10.70	10.65	8.47	8.47	8.49	31.31	31.31	31.31	79.2	79.3	79.4	7.23	7.24	7.25	2.66	2.89	2.89	3	2.50
	2:16		Middle	3.0	10.60	10.60		8.51	8.51		31.30	31.30		79.4	79.7		7.25	7.27		2.99	3.01		2	

Remarks:
Single underline denotes exceedance over Action Level.
Double underline denotes exceedance over Limit Level.



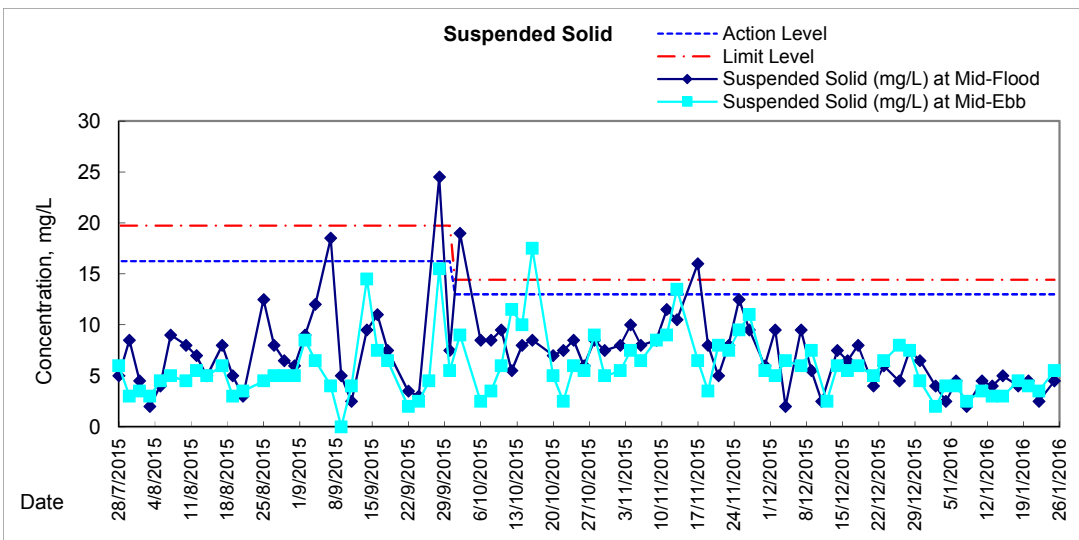
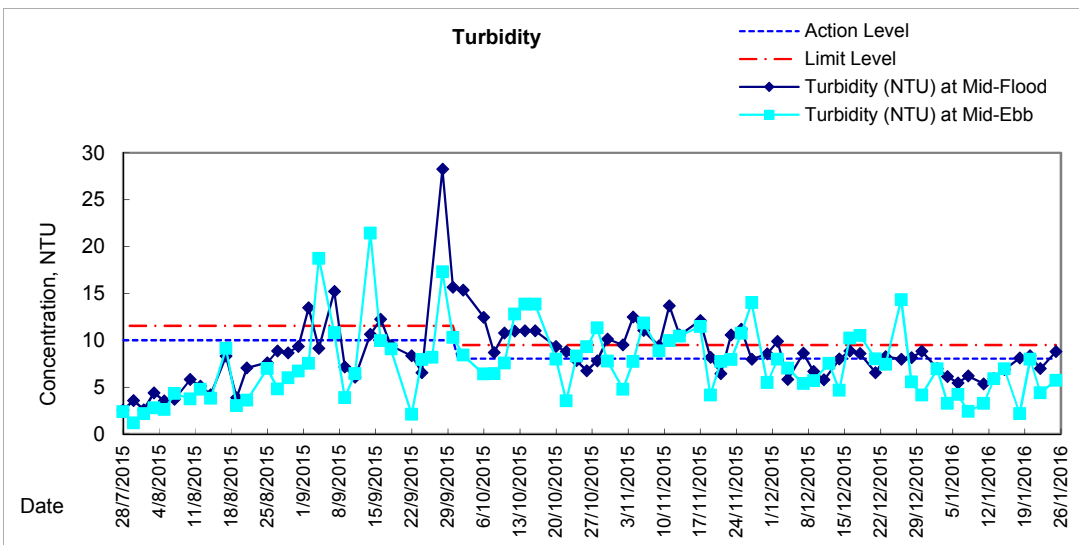
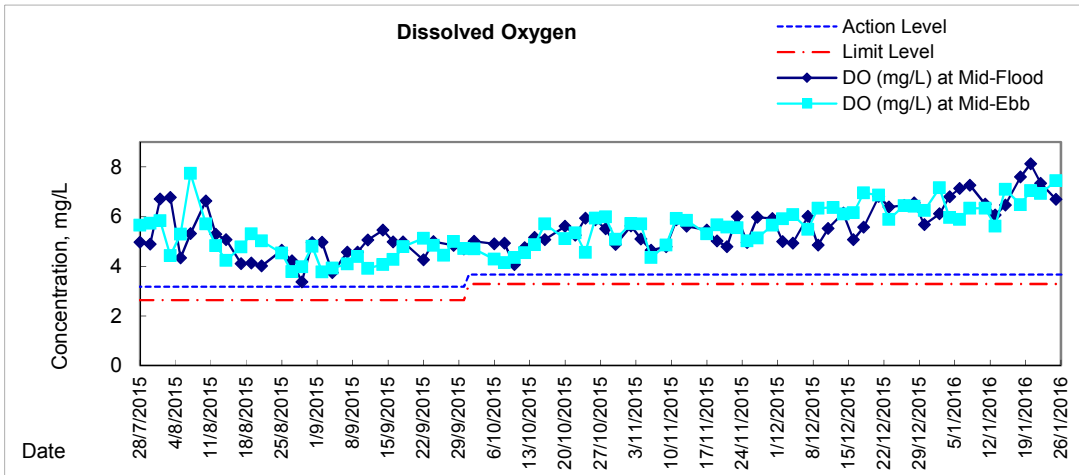
**Water Monitoring Result at WSD19 - Sheung Wan
Mid-Ebb Tide**

Date	Time	Weather Condition	Sampling Depth		Water Temperature		pH			Salinity		DO Saturation		DO		Turbidity		Suspended Solids						
					°C		-		ppt		%		mg/L		NTU		mg/L							
			m	Value	Average	Value	Average	Value	Average	Value	Average	Value	Average	Value	Average	Value	Average	Value	Average					
28/12/2015	1:06	Cloudy	Middle	2.5	18.50	18.50	18.54	8.37	8.37	8.38	32.06	32.06	32.06	83.0	82.5	82.7	6.43	6.40	6.41	5.61	5.57	5.54	7	7.50
	1:07		Middle	2.5	18.74	18.40	18.54	8.38	8.38	8.38	32.06	32.06	32.06	82.7	82.4	82.7	6.41	6.38	6.41	5.50	5.49	5.54	8	7.50
30/12/2015	1:58	Cloudy	Middle	3.0	18.90	18.90	18.90	8.19	8.19	8.23	32.23	32.23	32.25	81.7	81.5	81.4	6.27	6.25	6.25	4.16	4.30	4.15	4	4.50
	1:59		Middle	3.0	18.90	18.90	18.90	8.27	8.27	8.23	32.27	32.27	32.25	81.3	81.0	81.4	6.24	6.22	6.25	4.10	4.05	4.15	5	4.50
2/1/2016	3:55	Fine	Middle	3.0	18.90	18.90	18.75	8.28	8.28	8.31	32.16	32.16	32.16	93.9	92.8	93.0	7.22	7.14	7.15	6.95	6.94	6.94	2	2.00
	3:57		Middle	3.0	18.60	18.60	18.75	8.33	8.33	8.31	32.16	32.16	32.16	93.0	92.4	93.0	7.15	7.10	7.15	6.94	6.93	6.94	2	2.00
4/1/2016	20:30	Cloudy	Middle	3.5	20.30	20.30	20.35	8.37	8.37	8.38	32.04	32.04	32.04	78.8	79.9	79.7	5.89	5.98	5.96	3.69	3.12	3.27	4	4.00
	20:31		Middle	3.5	20.40	20.40	20.35	8.38	8.38	8.38	32.04	32.04	32.04	80.1	80.0	79.7	5.98	5.97	5.96	3.14	3.11	3.27	4	4.00
6/1/2016	20:45	Fine	Middle	3.5	20.40	20.40	20.45	8.37	8.37	8.37	31.56	31.56	31.57	77.9	78.7	78.8	5.86	5.82	5.88	4.07	4.60	4.21	4	4.00
	20:46		Middle	3.5	20.50	20.50	20.45	8.37	8.37	8.37	31.57	31.57	31.57	79.0	79.5	78.8	5.91	5.94	5.88	4.10	4.07	4.21	4	4.00
8/1/2016	22:56	Cloudy	Middle	3.5	19.10	19.10	19.10	8.02	8.02	8.03	31.18	31.18	31.23	81.7	82.0	82.6	6.26	6.30	6.33	2.48	2.41	2.40	3	2.50
	22:57		Middle	3.5	19.10	19.10	19.10	8.04	8.04	8.03	31.27	31.27	31.23	83.5	83.0	82.6	6.42	6.34	6.33	2.36	2.33	2.40	2	2.50
11/1/2016	0:05	Cloudy	Middle	3.0	18.50	18.50	18.50	8.38	8.38	8.39	31.14	31.14	31.14	80.4	81.6	81.5	6.25	6.34	6.34	3.43	3.39	3.26	3	3.50
	0:06		Middle	3.0	18.50	18.50	18.50	8.40	8.40	8.39	31.14	31.15	31.14	82.0	81.8	81.5	6.38	6.37	6.34	3.12	3.10	3.26	4	3.50
13/1/2016	14:14	Fine	Middle	3.5	19.80	19.80	19.80	8.39	8.39	8.40	31.13	31.13	31.13	75.0	74.5	73.9	5.69	5.66	5.61	5.89	5.89	5.89	3	3.00
	14:16		Middle	3.5	19.80	19.80	19.80	8.40	8.40	8.40	31.12	31.12	31.13	73.3	72.8	73.9	5.56	5.52	5.61	5.89	5.89	5.89	3	3.00
15/1/2016	17:05	Rainy	Middle	3.5	18.30	18.30	18.30	8.35	8.35	8.38	30.62	30.62	30.59	91.0	90.4	90.4	7.14	7.09	7.09	6.96	6.96	6.97	3	3.00
	17:07		Middle	3.5	18.30	18.30	18.30	8.40	8.40	8.38	30.55	30.55	30.59	90.1	90.0	90.4	7.06	7.06	7.09	6.97	6.98	6.97	3	3.00
18/1/2016	19:25	Cloudy	Middle	3.5	17.90	17.90	17.80	8.42	8.42	8.43	31.18	31.17	31.18	81.7	81.9	81.9	6.46	6.48	6.48	2.23	2.18	2.18	4	4.50
	19:26		Middle	3.5	17.70	17.70	17.80	8.44	8.44	8.43	31.18	31.18	31.18	82.1	81.9	81.9	6.50	6.48	6.48	2.16	2.16	2.18	5	4.50
20/1/2016	20:58	Cloudy	Middle	3.0	16.70	16.70	16.70	8.46	8.46	8.47	31.39	31.39	31.40	87.8	87.4	87.7	7.05	7.02	7.05	8.02	8.00	7.99	4	4.00
	20:59		Middle	3.0	16.70	16.70	16.70	8.48	8.48	8.47	31.40	31.40	31.40	87.9	87.8	87.7	7.06	7.05	7.05	7.98	7.96	7.99	4	4.00
22/1/2016	2:10	Cloudy	Middle	2.5	15.00	15.00	15.05	8.45	8.45	8.47	31.30	31.30	31.31	83.6	83.2	83.3	6.95	6.91	6.92	4.35	4.33	4.39	3	3.50
	2:11		Middle	2.5	15.10	15.10	15.05	8.48	8.48	8.47	31.31	31.31	31.31	83.2	83.3	83.3	6.91	6.92	6.92	4.38	4.49	4.39	4	3.50
25/1/2016	0:16	Fine	Middle	3.0	11.50	11.50	11.40	8.40	8.40	8.41	31.28	31.28	31.28	82.3	82.6	82.5	7.41	7.45	7.44	5.77	5.75	5.73	6	5.50
	0:17		Middle	3.0	11.30	11.30	11.40	8.41	8.41	8.41	31.28	31.28	31.28	82.7	82.5	82.5	7.46	7.44	7.44	5.71	5.69	5.73	5	5.50

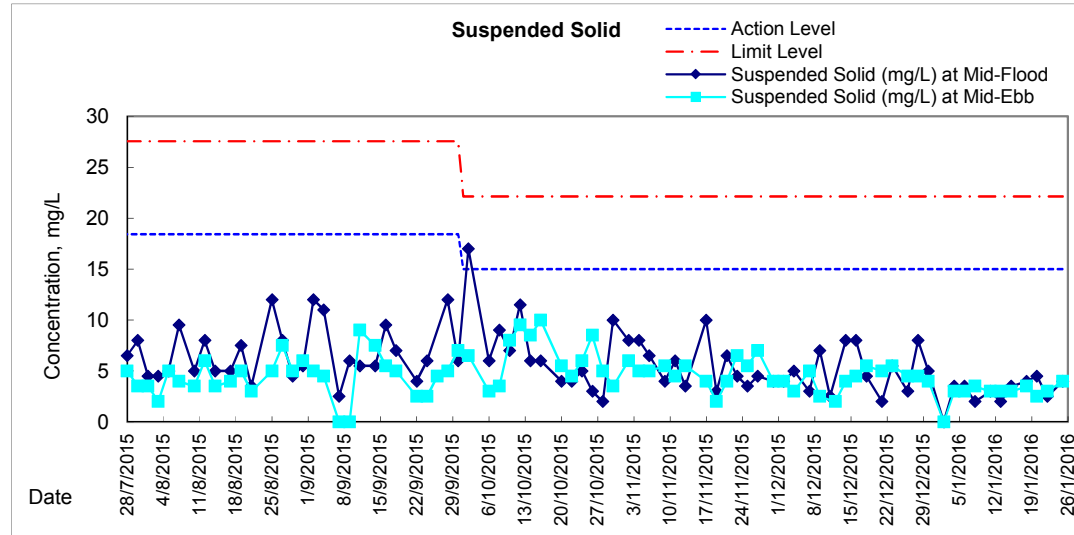
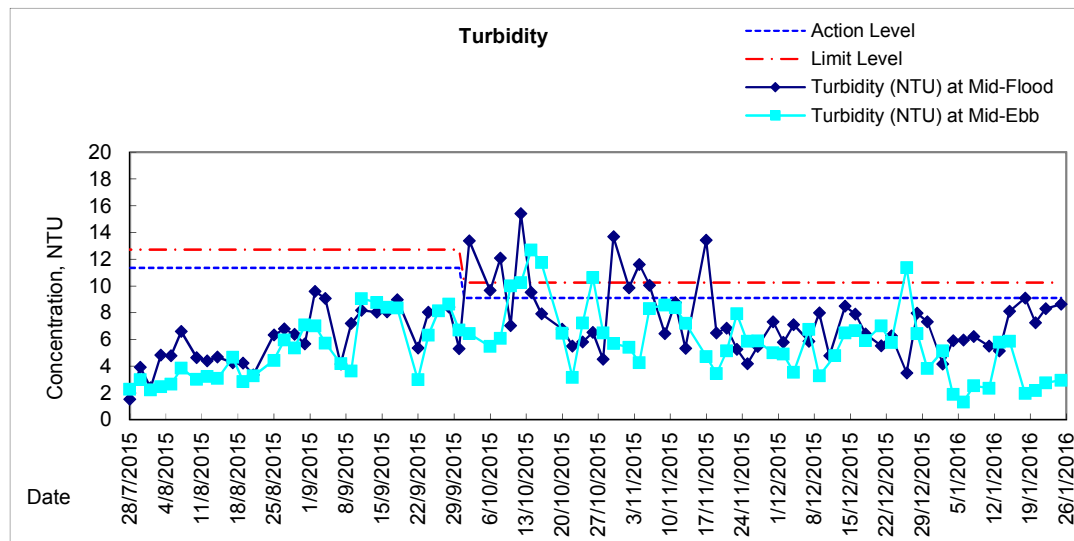
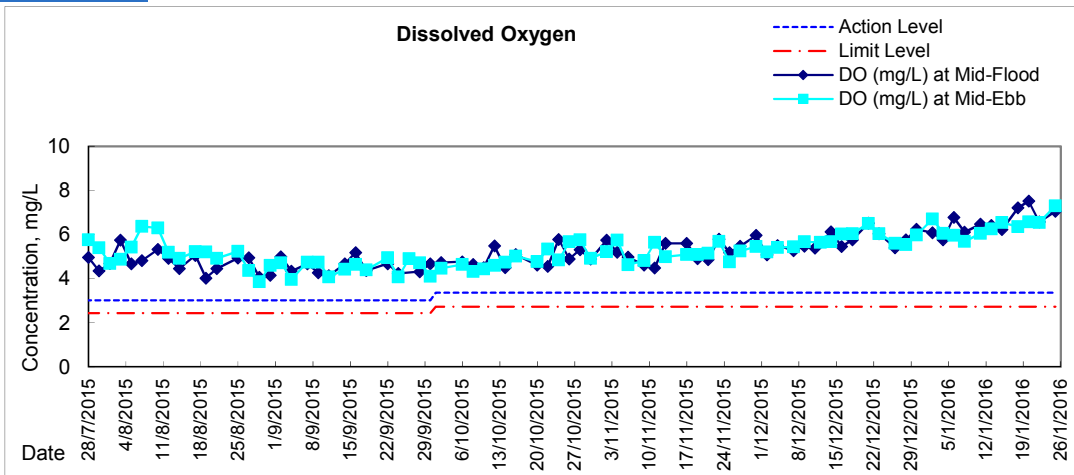
Remarks:
Single underline denotes exceedance over Action Level.
Double underline denotes exceedance over Limit Level.



Graphic Presentation of Water Quality Result of WSD19 - Sheung Wan

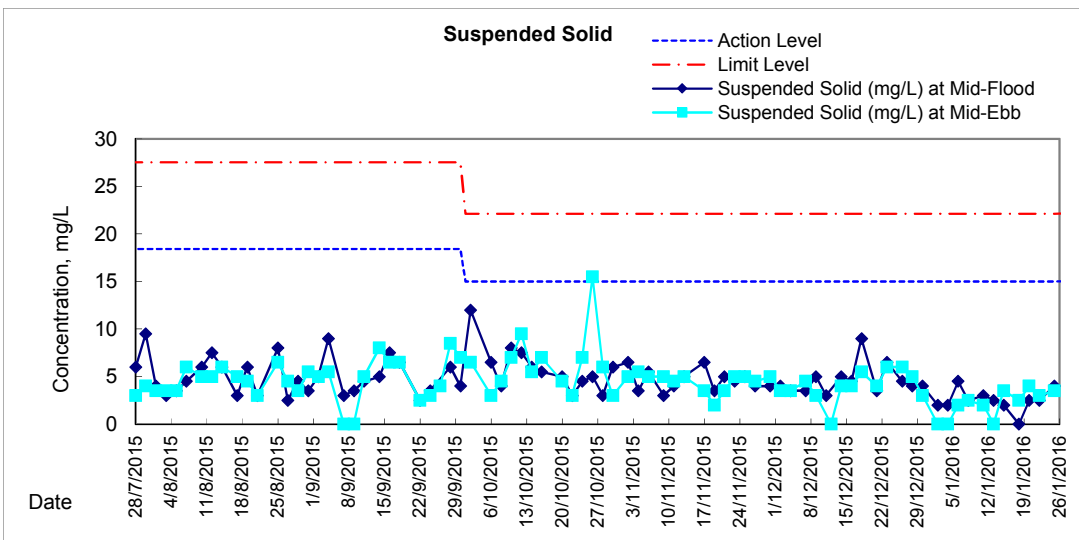
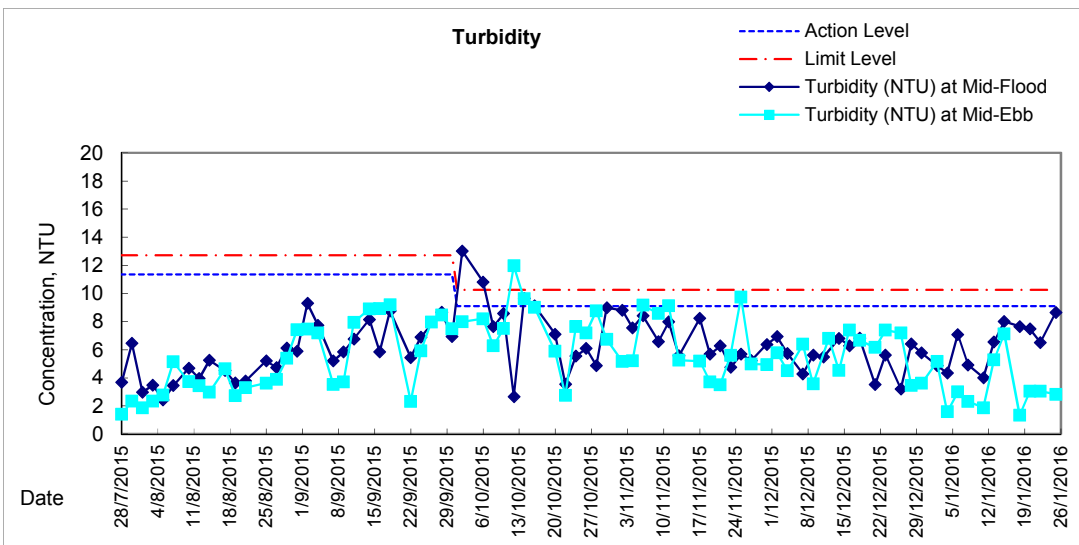
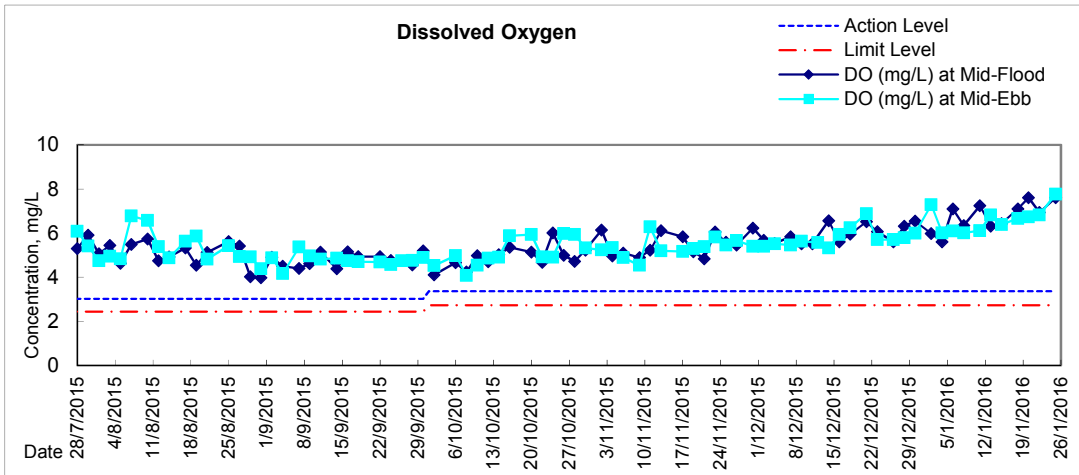


Graphic Presentation of Water Quality Result of C1 - HKCEC



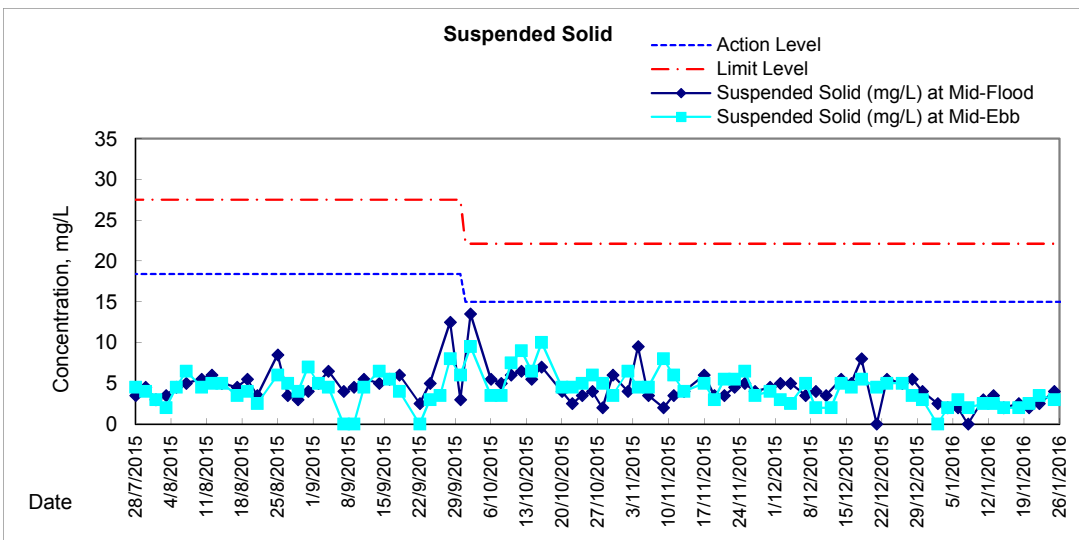
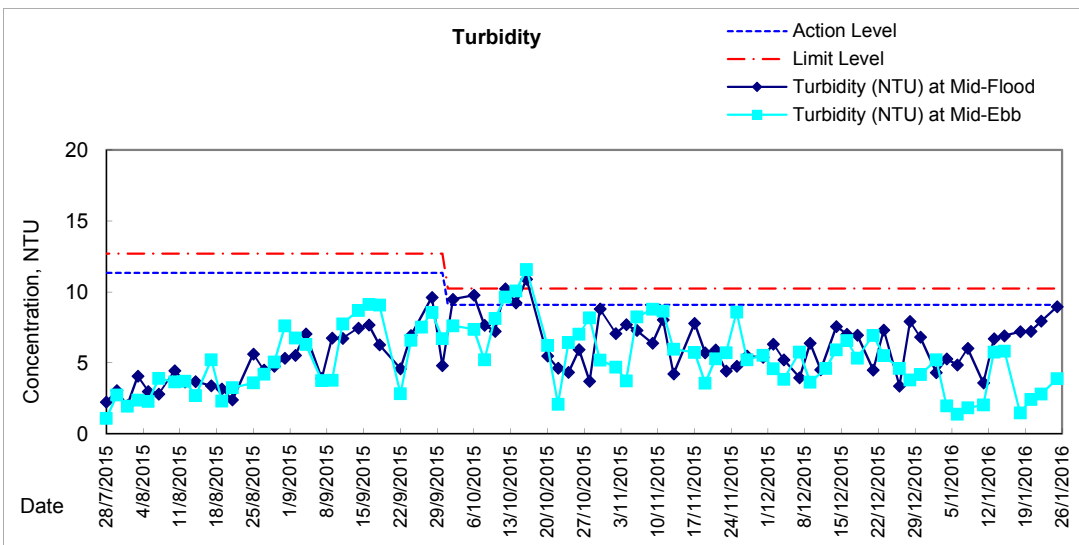
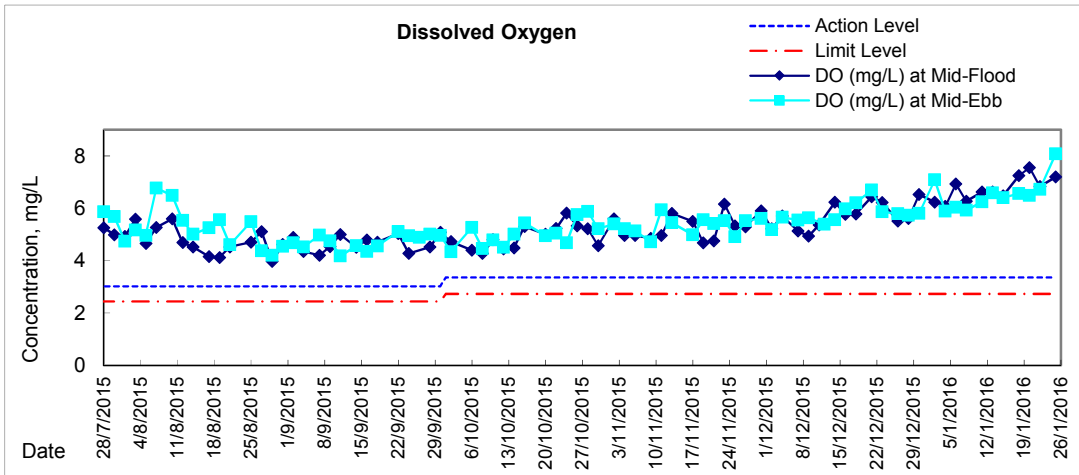


Graphic Presentation of Water Quality Result of P1 - HKCEC Phase I



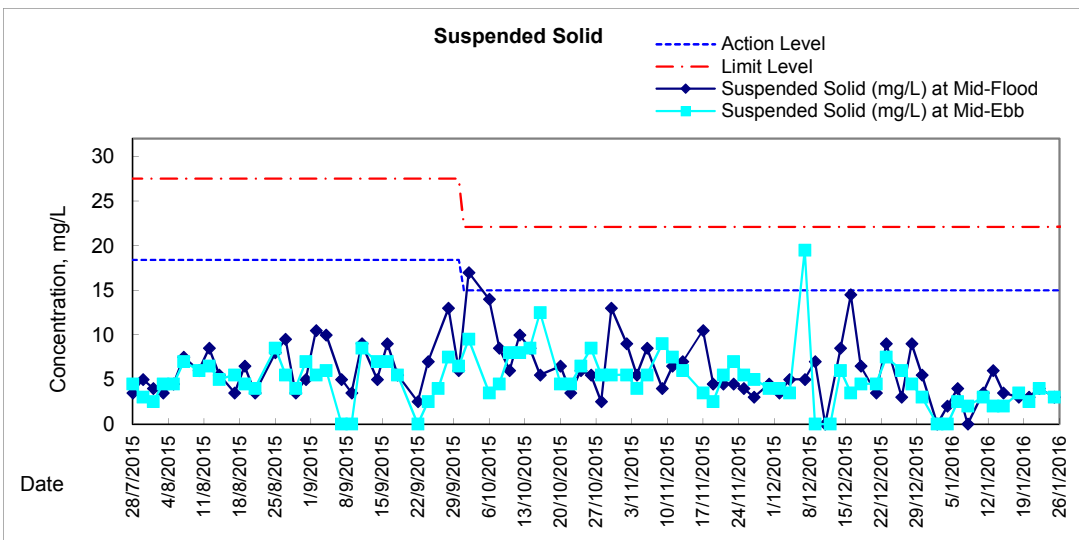
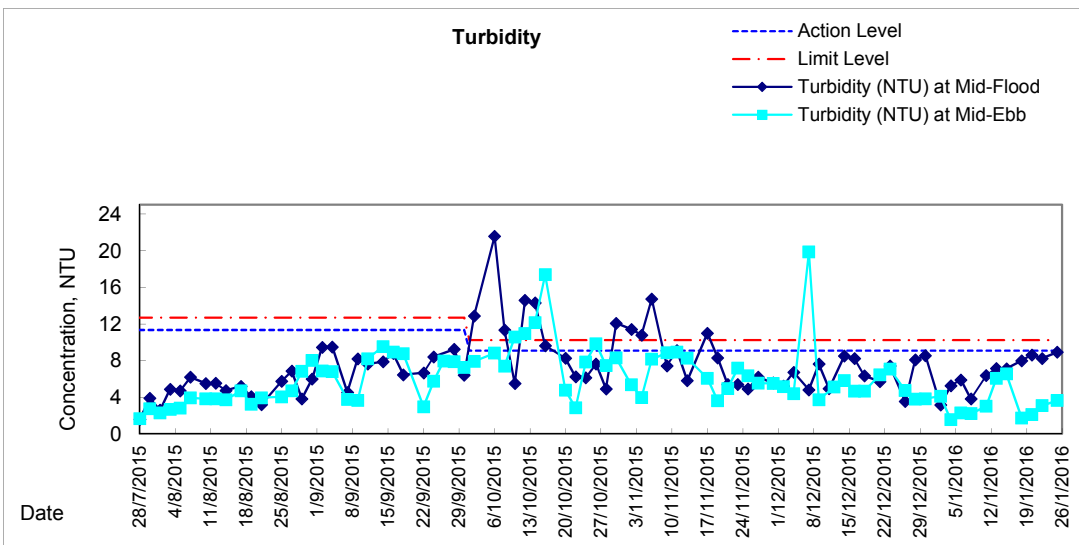
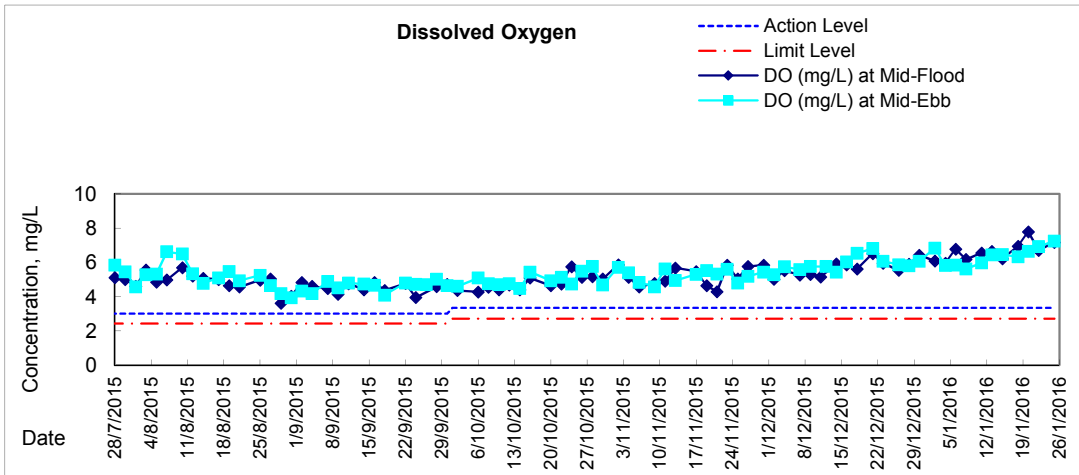


Graphic Presentation of Water Quality Result of P3 - APA



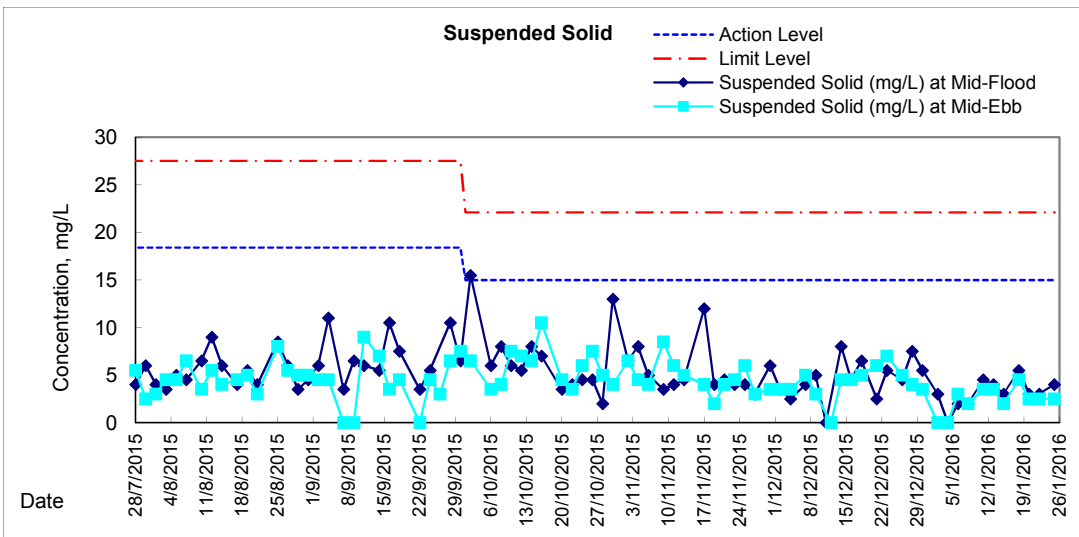
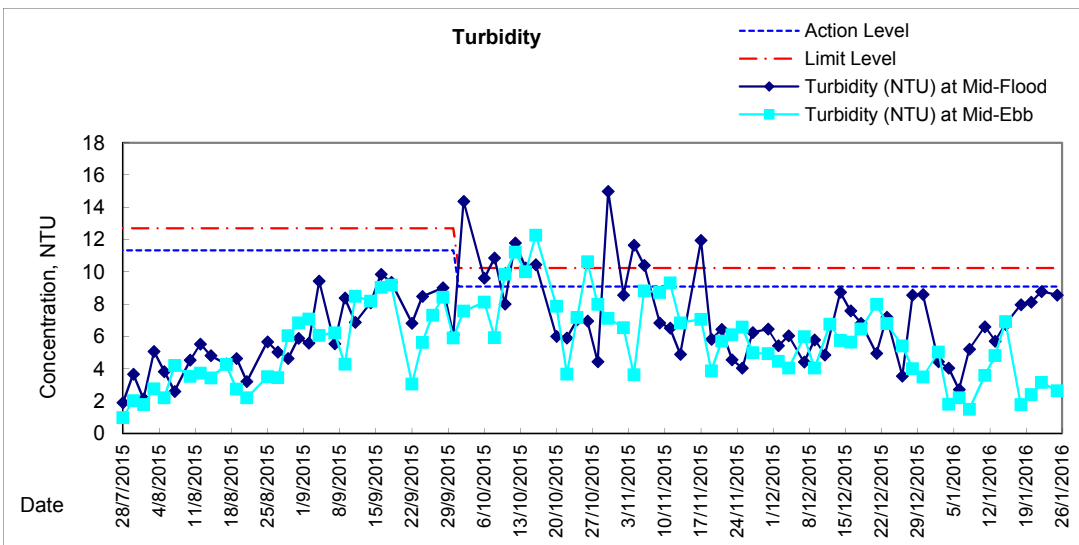
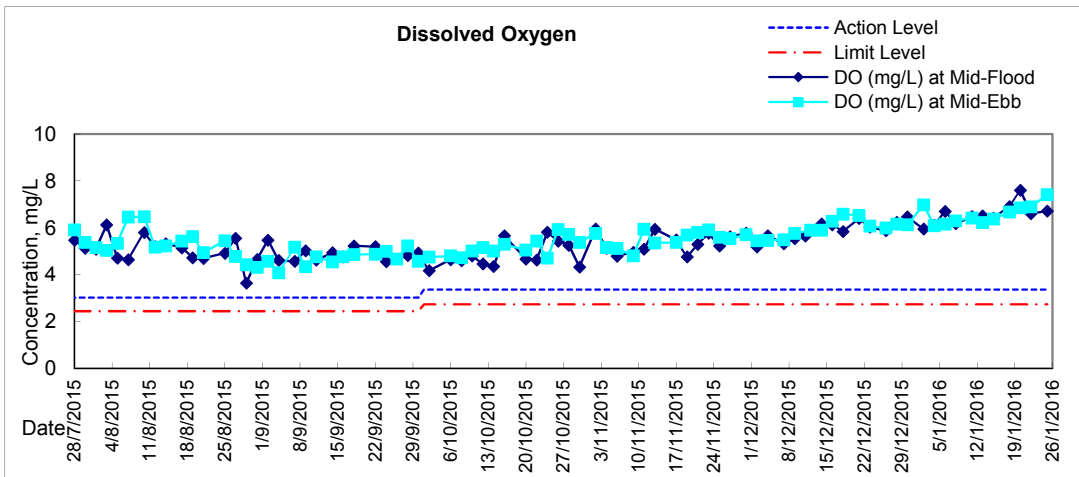


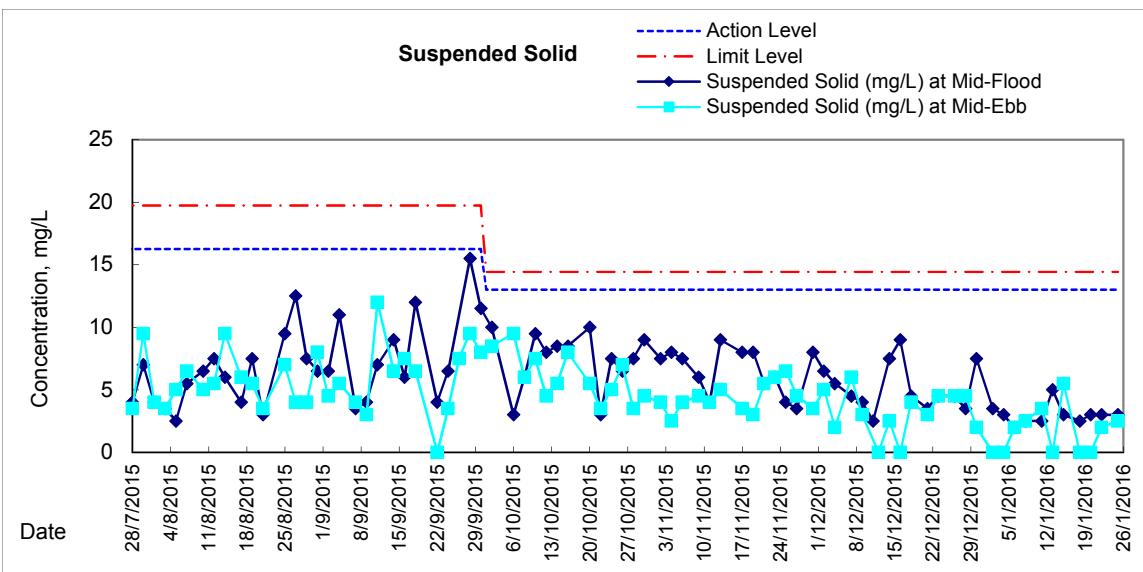
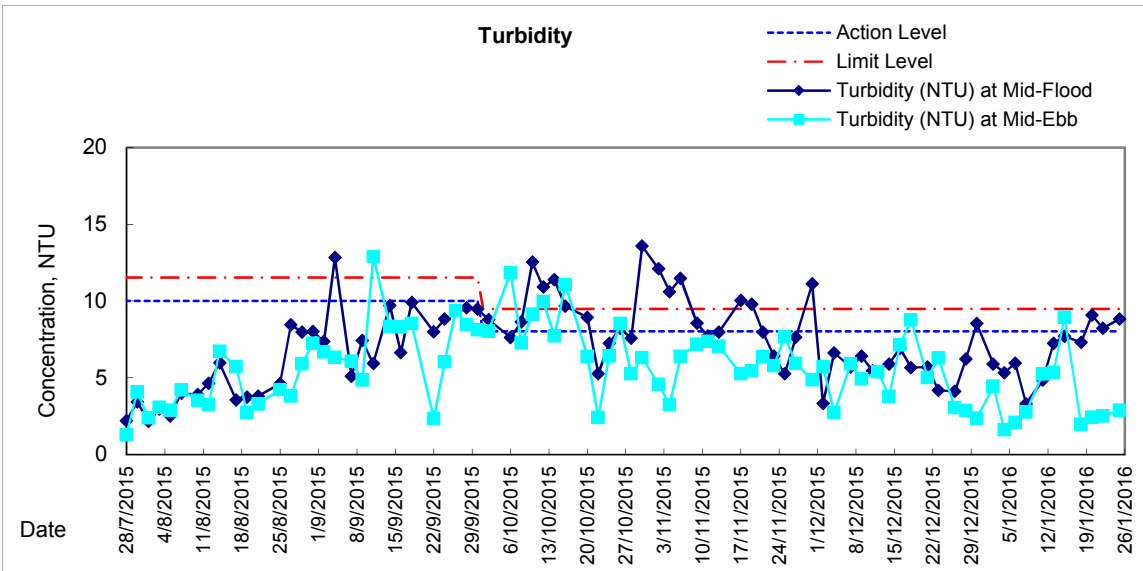
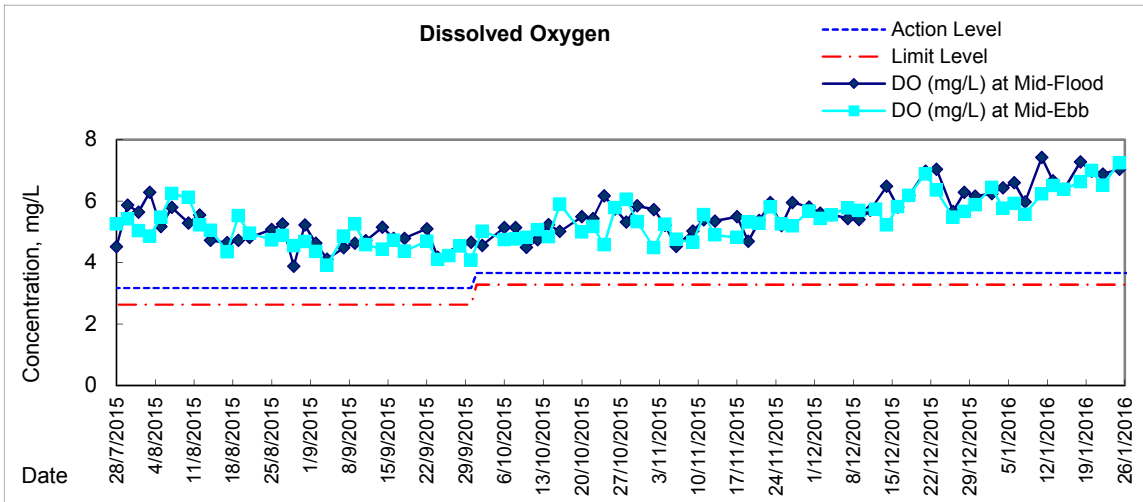
Graphic Presentation of Water Quality Result of P5 - WCT / RT / IT





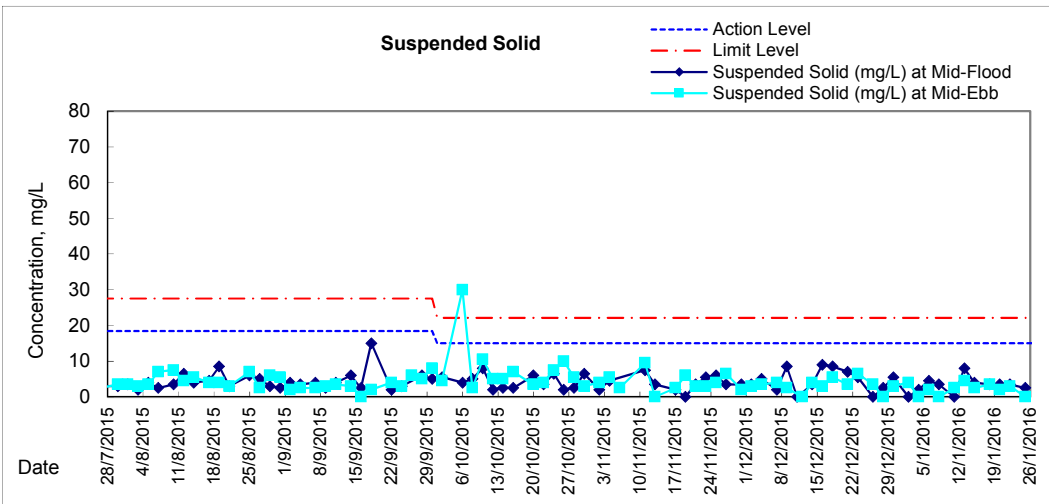
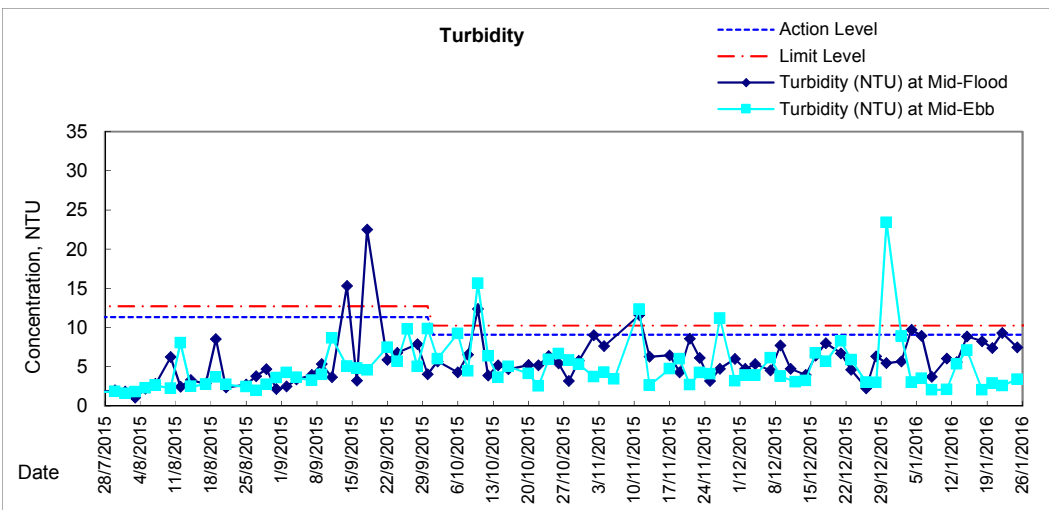
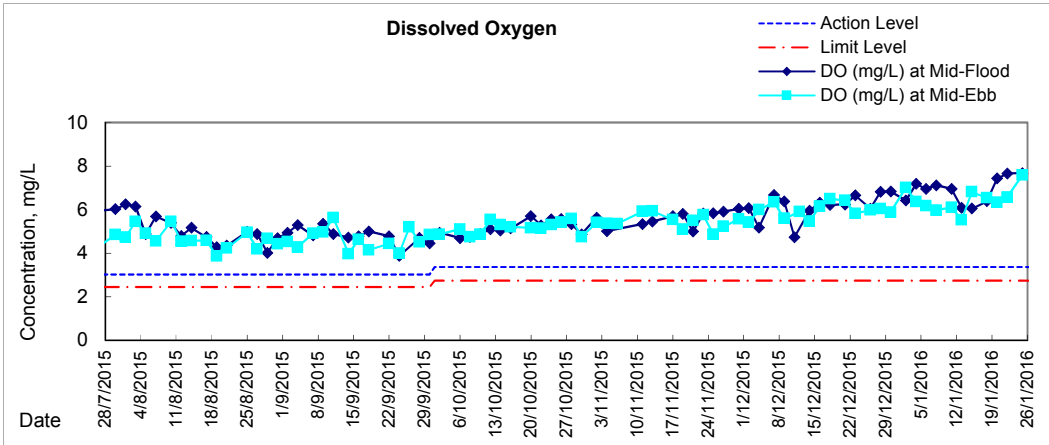
Graphic Presentation of Water Quality Result of P4 - SOC







Graphic Presentation of Water Quality Result of C7 - Windsor House





**Water Monitoring Result at C6 - Excelsior Hotel
Mid-Flood Tide**

Date	Time	Weater Condition	Sampling Depth		Water Temperature			pH			Salinity			DO Saturation		DO			
					°C			-			ppt		%		mg/L				
			m	Value	Average	Value	Average	Value	Average	Value	Average	Value	Average	Value	Average				
28/12/2015	-	Fine	Surface	-	-	-	-	-	-	-	-	-	-	-	-	-	-	-	
	10:15		Middle	1.5	19.50	19.50	19.5	8.32	8.32	8.3	31.35	31.35	31.4	88.5	88.8	88.7	6.76	6.77	6.77
	-		Bottom	-	-	-	-	-	-	-	-	-	-	-	-	-	-	-	-
30/12/2015	-	Fine	Surface	-	-	-	-	-	-	-	-	-	-	-	-	-	-	-	
	11:10		Middle	1.5	19.60	19.60	19.6	8.39	8.39	8.4	31.28	31.28	31.3	81.2	81.0	81.1	6.19	6.17	6.18
	-		Bottom	-	-	-	-	-	-	-	-	-	-	-	-	-	-	-	-
2/1/2016	-	Fine	Surface	-	-	-	-	-	-	-	-	-	-	-	-	-	-	-	
	10:50		Middle	1.5	19.90	19.90	19.9	8.20	8.20	8.2	29.16	29.16	29.2	80.6	80.5	80.6	6.18	6.17	6.18
	-		Bottom	-	-	-	-	-	-	-	-	-	-	-	-	-	-	-	-
4/1/2016	-	Fine	Surface	-	-	-	-	-	-	-	-	-	-	-	-	-	-	-	
	10:43		Middle	1.5	21.00	21.00	21.0	8.26	8.26	8.3	30.35	30.35	30.4	83.0	82.6	82.8	6.19	6.16	6.18
	-		Bottom	-	-	-	-	-	-	-	-	-	-	-	-	-	-	-	-
6/1/2016	-	Fine	Surface	-	-	-	-	-	-	-	-	-	-	-	-	-	-	-	
	11:59		Middle	1.5	21.70	21.70	21.7	8.36	8.36	8.4	31.13	31.13	31.1	89.4	89.6	89.5	6.73	6.74	6.74
	-		Bottom	-	-	-	-	-	-	-	-	-	-	-	-	-	-	-	-
8/1/2016	-	Fine	Surface	-	-	-	-	-	-	-	-	-	-	-	-	-	-	-	
	13:50		Middle	1.5	20.70	20.70	20.7	8.25	8.25	8.3	29.14	29.14	29.1	84.9	84.6	84.8	6.41	6.38	6.40
	-		Bottom	-	-	-	-	-	-	-	-	-	-	-	-	-	-	-	-
11/1/2016	10:00	Rainy	Surface	1.0	19.70	19.70	19.7	8.47	8.47	8.5	27.92	27.92	27.9	83.2	83.5	83.4	6.45	6.47	6.46
	-		Middle	2.0	-	-	-	-	-	-	-	-	-	-	-	-	-	-	-
	10:02		Bottom	3.0	19.70	19.70	19.7	8.46	8.46	8.5	28.72	28.72	28.7	85.5	86.3	85.9	6.59	6.67	6.63
13/1/2016	-	Fine	Surface	-	-	-	-	-	-	-	-	-	-	-	-	-	-	-	
	10:38		Middle	1.5	19.30	19.30	19.3	8.35	8.35	8.4	27.93	27.93	27.9	86.8	86.3	86.6	6.79	6.75	6.77
	-		Bottom	-	-	-	-	-	-	-	-	-	-	-	-	-	-	-	-
15/1/2016	-	Rainy	Surface	-	-	-	-	-	-	-	-	-	-	-	-	-	-	-	
	12:24		Middle	1.5	17.60	17.60	17.6	8.22	8.22	8.2	29.12	29.12	29.1	83.9	81.3	82.6	6.72	6.50	6.61
	-		Bottom	-	-	-	-	-	-	-	-	-	-	-	-	-	-	-	-
18/1/2016	-	Fine	Surface	-	-	-	-	-	-	-	-	-	-	-	-	-	-	-	
	9:50		Middle	1.0	18.30	18.30	18.3	8.27	8.27	8.3	27.64	27.64	27.6	79.4	80.0	79.7	6.54	6.39	6.47
	-		Bottom	-	-	-	-	-	-	-	-	-	-	-	-	-	-	-	-
20/1/2016	16:15	Cloudy	Surface	1.0	18.00	18.00	18.0	8.49	8.49	8.5	30.22	30.22	30.2	90.3	91.1	90.7	7.13	7.19	7.16
	-		Middle	2.0	-	-	-	-	-	-	-	-	-	-	-	-	-	-	-
	16:17		Bottom	3.0	18.10	18.10	18.1	8.50	8.50	8.5	30.38	30.38	30.4	91.7	91.5	91.6	7.22	7.20	7.21
22/1/2016	17:20	Rainy	Surface	1.0	17.50	17.50	17.5	8.46	8.46	8.5	29.76	29.76	29.8	87.6	88.8	88.2	7.01	7.11	7.06
	-		Middle	2.0	-	-	-	-	-	-	-	-	-	-	-	-	-	-	-
	17:22		Bottom	3.0	17.60	17.60	17.6	8.49	8.49	8.5	29.52	29.52	29.5	93.2	93.4	93.3	7.46	7.47	7.47
25/1/2016	9:50	Fine	Surface	1.0	14.90	14.90	14.9	8.47	8.47	8.5	29.86	29.86	29.9	88.8	89.7	89.3	7.49	7.58	7.54
	-		Middle	2.0	-	-	-	-	-	-	-	-	-	-	-	-	-	-	-
	9:52		Bottom	3.0	15.00	15.00	15.0	8.46	8.46	8.5	30.92	30.92	30.9	92.4	92.2	92.3	7.69	7.68	7.69

Remarks:
Single underline denotes exceedance over Action Level.
Double underline denotes exceedance over Limit Level.



**Water Monitoring Result at Ex-WPCWA SW - South-western corners of ex-Public Cargo Works Area
Mid-Flood Tide**

Date	Time	Weater Condition	Sampling Depth		Water Temperature			pH			Salinity			DO Saturation		DO			
					°C			-			ppt			%		mg/L			
			m	Value	Average	Value	Average	Value	Average	Value	Average	Value	Average	Value	Average				
28/12/2015	-	Fine	Surface	-	-	-	-	-	-	-	-	-	-	-	-	-	-	-	-
	10:00		Middle	1.5	19.90	19.90	19.9	8.38	8.38	8.4	22.57	22.57	22.6	57.4	56.8	57.1	4.58	4.55	4.57
	-		Bottom	-	-	-	-	-	-	-	-	-	-	-	-	-	-	-	-
30/12/2015	-	Fine	Surface	-	-	-	-	-	-	-	-	-	-	-	-	-	-	-	-
	10:45		Middle	1.5	19.60	19.60	19.6	8.30	8.30	8.3	30.92	30.92	30.9	76.3	75.5	75.9	5.83	5.77	5.80
	-		Bottom	-	-	-	-	-	-	-	-	-	-	-	-	-	-	-	-
2/1/2016	-	Fine	Surface	-	-	-	-	-	-	-	-	-	-	-	-	-	-	-	-
	10:33		Middle	1.0	20.60	20.60	20.6	8.39	8.39	8.4	16.40	16.40	16.4	38.4	38.2	38.3	3.13	3.12	<u>3.13</u>
	-		Bottom	-	-	-	-	-	-	-	-	-	-	-	-	-	-	-	-
4/1/2016	-	Fine	Surface	-	-	-	-	-	-	-	-	-	-	-	-	-	-	-	-
	14:45		Middle	1.0	20.40	20.40	20.4	8.26	8.26	8.3	29.79	29.79	29.8	68.6	67.5	68.1	5.19	5.11	5.15
	-		Bottom	-	-	-	-	-	-	-	-	-	-	-	-	-	-	-	-
6/1/2016	-	Fine	Surface	-	-	-	-	-	-	-	-	-	-	-	-	-	-	-	-
	13:30		Middle	1.5	21.30	21.30	21.3	8.24	8.24	8.2	27.47	27.47	27.5	57.0	56.2	56.6	4.29	4.22	4.26
	-		Bottom	-	-	-	-	-	-	-	-	-	-	-	-	-	-	-	-
8/1/2016	-	Fine	Surface	-	-	-	-	-	-	-	-	-	-	-	-	-	-	-	-
	17:10		Middle	1.0	20.50	20.50	20.5	8.34	8.34	8.3	28.97	28.97	29.0	60.7	60.3	60.5	4.67	4.63	4.65
	-		Bottom	-	-	-	-	-	-	-	-	-	-	-	-	-	-	-	-
11/1/2016	-	Rainy	Surface	-	-	-	-	-	-	-	-	-	-	-	-	-	-	-	-
	9:35		Middle	1.5	19.50	19.50	19.5	8.42	8.42	8.4	30.02	30.02	30.0	89.3	88.8	89.1	6.87	6.83	6.85
	-		Bottom	-	-	-	-	-	-	-	-	-	-	-	-	-	-	-	-
13/1/2016	-	Fine	Surface	-	-	-	-	-	-	-	-	-	-	-	-	-	-	-	-
	10:20		Middle	1.0	19.40	19.40	19.4	8.39	8.39	8.4	28.85	28.85	28.9	70.1	68.7	69.4	5.43	5.33	5.38
	-		Bottom	-	-	-	-	-	-	-	-	-	-	-	-	-	-	-	-
15/1/2016	-	Rainy	Surface	-	-	-	-	-	-	-	-	-	-	-	-	-	-	-	-
	11:46		Middle	1.0	18.80	18.80	18.8	8.49	8.49	8.5	20.10	20.10	20.1	60.2	59.1	59.7	4.98	4.88	4.93
	-		Bottom	-	-	-	-	-	-	-	-	-	-	-	-	-	-	-	-
18/1/2016	-	Fine	Surface	-	-	-	-	-	-	-	-	-	-	-	-	-	-	-	-
	13:53		Middle	1.0	19.00	19.00	19.0	8.33	8.33	8.3	28.29	28.29	28.3	88.1	85.7	86.9	6.91	6.72	6.82
	-		Bottom	-	-	-	-	-	-	-	-	-	-	-	-	-	-	-	-
20/1/2016	-	Cloudy	Surface	-	-	-	-	-	-	-	-	-	-	-	-	-	-	-	-
	15:52		Middle	1.0	18.30	18.30	18.3	8.51	8.51	8.5	30.12	30.12	30.1	85.0	83.8	84.4	6.69	6.59	6.64
	-		Bottom	-	-	-	-	-	-	-	-	-	-	-	-	-	-	-	-
22/1/2016	-	Rainy	Surface	-	-	-	-	-	-	-	-	-	-	-	-	-	-	-	-
	16:50		Middle	1.0	18.00	18.00	18.0	8.57	8.57	8.6	19.68	19.68	19.7	61.7	60.3	61.0	5.19	5.07	5.13
	-		Bottom	-	-	-	-	-	-	-	-	-	-	-	-	-	-	-	-
25/1/2016	-	Fine	Surface	-	-	-	-	-	-	-	-	-	-	-	-	-	-	-	-
	9:45		Middle	1.5	15.30	15.30	15.3	8.49	8.49	8.5	20.02	20.02	20.0	63.0	62.2	62.6	5.60	5.53	5.57
	-		Bottom	-	-	-	-	-	-	-	-	-	-	-	-	-	-	-	-

Remarks:
Single underline denotes exceedance over Action Level.
Double underline denotes exceedance over Limit Level.



**Water Monitoring Result at C6 - Excelsior Hotel
Mid-Ebb Tide**

Date	Time	Weater Condition	Sampling Depth		Water Temperature			pH			Salinity		DO Saturation		DO				
					°C			-			ppt		%		mg/L				
			m	Value	Average	Value	Average	Value	Average	Value	Average	Value	Average	Value	Average				
28/12/2015	-	Cloudy	Surface	-	-	-	-	-	-	-	-	-	-	-	-	-	-	-	
	2:52		Middle	1.0	18.80	18.80	18.8	8.05	8.06	8.1	26.55	26.55	26.6	53.9	55.9	54.9	4.39	4.45	4.42
	-		Bottom	-	-	-	-	-	-	-	-	-	-	-	-	-	-	-	-
30/12/2015	-	Cloudy	Surface	-	-	-	-	-	-	-	-	-	-	-	-	-	-	-	-
	1:37		Middle	1.5	18.70	18.70	18.7	8.33	8.33	8.3	29.78	29.78	29.8	62.4	62.6	62.5	4.88	4.91	4.90
	-		Bottom	-	-	-	-	-	-	-	-	-	-	-	-	-	-	-	-
2/1/2016	-	Fine	Surface	-	-	-	-	-	-	-	-	-	-	-	-	-	-	-	-
	17:40		Middle	1.5	19.60	19.60	19.6	8.22	8.22	8.2	31.64	31.64	31.6	71.1	70.1	70.6	5.40	5.32	5.36
	-		Bottom	-	-	-	-	-	-	-	-	-	-	-	-	-	-	-	-
4/1/2016	-	Cloudy	Surface	-	-	-	-	-	-	-	-	-	-	-	-	-	-	-	-
	18:22		Middle	1.5	20.70	20.70	20.7	8.05	8.05	8.1	30.89	30.89	30.9	75.9	76.6	76.3	5.69	5.74	5.72
	-		Bottom	-	-	-	-	-	-	-	-	-	-	-	-	-	-	-	-
6/1/2016	-	Fine	Surface	-	-	-	-	-	-	-	-	-	-	-	-	-	-	-	-
	19:27		Middle	1.5	20.50	20.50	20.5	8.09	8.09	8.1	29.75	29.75	29.8	70.0	69.8	69.9	5.28	5.26	5.27
	-		Bottom	-	-	-	-	-	-	-	-	-	-	-	-	-	-	-	-
8/1/2016	-	Cloudy	Surface	-	-	-	-	-	-	-	-	-	-	-	-	-	-	-	-
	1:50		Middle	1.0	19.00	19.00	19.0	8.36	8.36	8.4	32.34	32.34	32.3	58.9	58.1	58.5	4.69	4.58	4.64
	-		Bottom	-	-	-	-	-	-	-	-	-	-	-	-	-	-	-	-
11/1/2016	-	Cloudy	Surface	-	-	-	-	-	-	-	-	-	-	-	-	-	-	-	-
	2:32		Middle	1.0	18.80	18.80	18.8	8.28	8.29	8.3	26.69	26.69	26.7	65.2	67.4	66.3	5.18	5.36	5.27
	-		Bottom	-	-	-	-	-	-	-	-	-	-	-	-	-	-	-	-
13/1/2016	-	Fine	Surface	-	-	-	-	-	-	-	-	-	-	-	-	-	-	-	-
	16:15		Middle	1.5	19.70	19.70	19.7	8.28	8.28	8.3	29.55	29.55	29.6	73.7	72.9	73.3	5.66	5.60	5.63
	-		Bottom	-	-	-	-	-	-	-	-	-	-	-	-	-	-	-	-
15/1/2016	-	Rainy	Surface	-	-	-	-	-	-	-	-	-	-	-	-	-	-	-	-
	16:35		Middle	1.0	18.30	18.30	18.3	8.48	8.48	8.5	27.69	27.69	27.7	83.7	82.7	83.2	6.68	6.61	6.65
	-		Bottom	-	-	-	-	-	-	-	-	-	-	-	-	-	-	-	-
18/1/2016	-	Cloudy	Surface	-	-	-	-	-	-	-	-	-	-	-	-	-	-	-	-
	17:55		Middle	1.5	18.10	18.00	18.1	8.40	8.40	8.4	29.14	29.47	29.3	73.9	75.2	74.6	5.87	5.97	5.92
	-		Bottom	-	-	-	-	-	-	-	-	-	-	-	-	-	-	-	-
20/1/2016	-	Cloudy	Surface	-	-	-	-	-	-	-	-	-	-	-	-	-	-	-	-
	19:25		Middle	1.5	17.80	17.80	17.8	8.36	8.36	8.4	30.55	30.55	30.6	77.4	77.3	77.4	6.13	6.12	6.13
	-		Bottom	-	-	-	-	-	-	-	-	-	-	-	-	-	-	-	-
22/1/2016	-	Cloudy	Surface	-	-	-	-	-	-	-	-	-	-	-	-	-	-	-	-
	23:23		Middle	1.5	15.90	15.90	15.9	8.47	8.47	8.5	25.71	25.71	25.7	68.7	69.8	69.3	5.80	5.89	5.85
	-		Bottom	-	-	-	-	-	-	-	-	-	-	-	-	-	-	-	-
25/1/2016	-	Fine	Surface	-	-	-	-	-	-	-	-	-	-	-	-	-	-	-	-
	1:56		Middle	1.0	10.70	10.70	10.7	8.46	8.45	8.5	27.71	27.71	27.7	59.9	60.3	60.1	5.72	5.76	5.74
	-		Bottom	-	-	-	-	-	-	-	-	-	-	-	-	-	-	-	-

Remarks:
Single underline denotes exceedance over Action Level.
Double underline denotes exceedance over Limit Level.

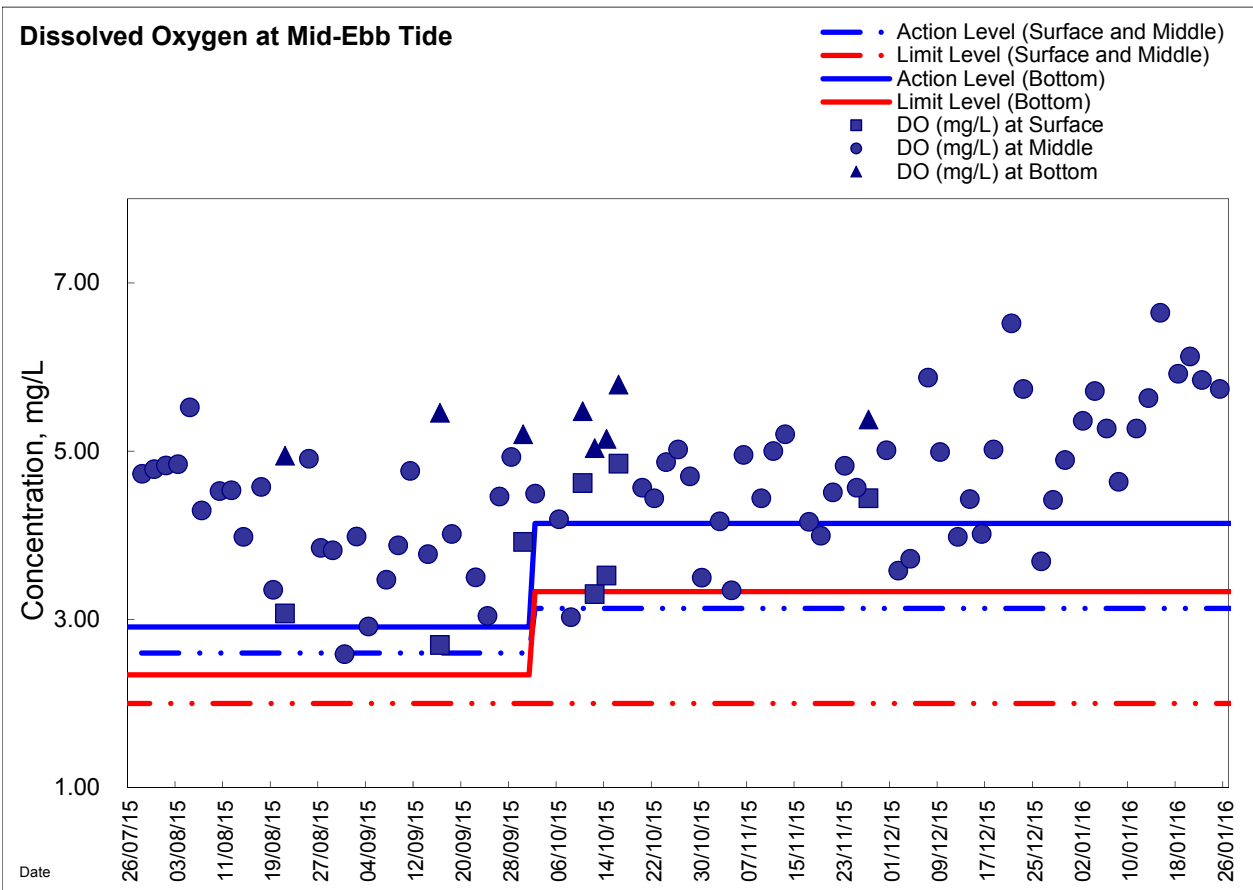
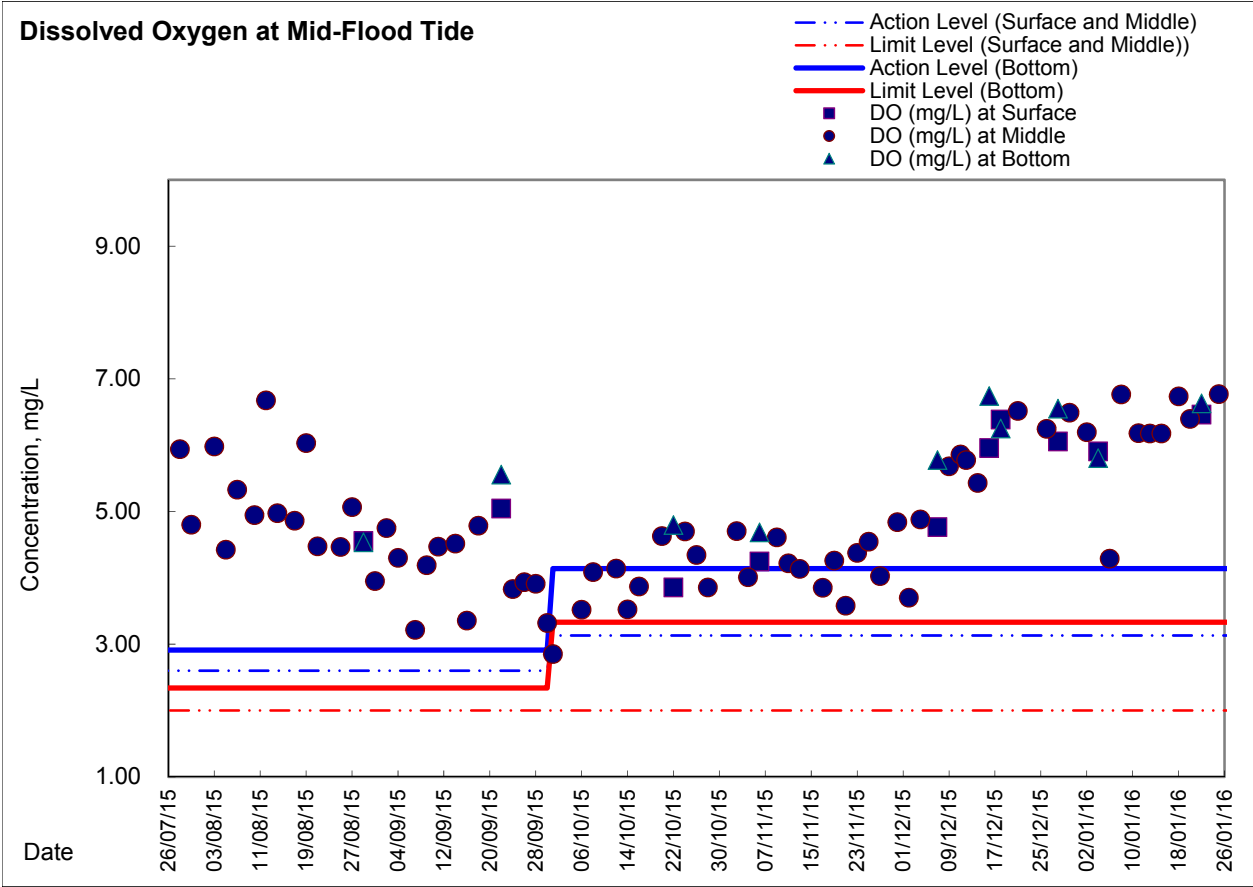


**Water Monitoring Result at Ex-WPCWA SW - South-western corners of ex-Public Cargo Works Area
Mid-Ebb Tide**

Date	Time	Weater Condition	Sampling Depth		Water Temperature			pH		Salinity		DO Saturation		DO					
					°C			-		ppt		%		mg/L					
			m	Value	Average	Value	Average	Value	Average	Value	Average	Value	Average	Value	Average				
28/12/2015	-	Cloudy	Surface	-	-	-	-	-	-	-	-	-	-	-	-	-	-	-	
	4:05		Middle	1.0	19.10	19.10	19.1	8.25	8.25	8.3	18.24	18.24	18.2	55.9	54.8	55.4	4.86	4.77	4.82
	-		Bottom	-	-	-	-	-	-	-	-	-	-	-	-	-	-	-	-
30/12/2015	-	Cloudy	Surface	-	-	-	-	-	-	-	-	-	-	-	-	-	-	-	
	1:10		Middle	1.5	18.80	18.80	18.8	8.44	8.44	8.4	25.13	25.13	25.1	63.8	62.9	63.4	5.13	5.04	5.09
	-		Bottom	-	-	-	-	-	-	-	-	-	-	-	-	-	-	-	-
2/1/2016	-	Fine	Surface	-	-	-	-	-	-	-	-	-	-	-	-	-	-	-	
	17:19		Middle	1.0	20.90	20.90	20.9	8.72	8.72	8.7	8.59	8.59	8.6	23.6	23.4	23.5	2.00	1.99	<u>2.00</u>
	-		Bottom	-	-	-	-	-	-	-	-	-	-	-	-	-	-	-	-
4/1/2016	-	Cloudy	Surface	-	-	-	-	-	-	-	-	-	-	-	-	-	-	-	
	18:55		Middle	1.5	20.60	20.60	20.6	7.98	7.99	8.0	29.77	29.77	29.8	67.4	68.7	68.1	5.09	5.18	5.14
	-		Bottom	-	-	-	-	-	-	-	-	-	-	-	-	-	-	-	-
6/1/2016	-	Fine	Surface	-	-	-	-	-	-	-	-	-	-	-	-	-	-	-	
	19:06		Middle	1.5	21.20	21.20	21.2	8.29	8.29	8.3	22.22	22.22	22.2	57.3	57.0	57.2	4.51	4.48	4.50
	-		Bottom	-	-	-	-	-	-	-	-	-	-	-	-	-	-	-	-
8/1/2016	-	Cloudy	Surface	-	-	-	-	-	-	-	-	-	-	-	-	-	-	-	
	2:21		Middle	1.0	19.10	19.10	19.1	8.37	8.37	8.4	19.76	19.76	19.8	53.0	50.3	51.7	4.83	4.66	4.75
	-		Bottom	-	-	-	-	-	-	-	-	-	-	-	-	-	-	-	-
11/1/2016	-	Cloudy	Surface	-	-	-	-	-	-	-	-	-	-	-	-	-	-	-	
	3:10		Middle	1.0	18.70	18.70	18.7	8.62	8.62	8.6	14.65	14.65	14.7	67.7	63.6	65.7	5.74	5.44	5.59
	-		Bottom	-	-	-	-	-	-	-	-	-	-	-	-	-	-	-	-
13/1/2016	-	Fine	Surface	-	-	-	-	-	-	-	-	-	-	-	-	-	-	-	
	15:58		Middle	1.0	20.10	20.10	20.1	8.40	8.40	8.4	21.89	21.89	21.9	49.7	49.1	49.4	3.96	3.91	3.94
	-		Bottom	-	-	-	-	-	-	-	-	-	-	-	-	-	-	-	-
15/1/2016	-	Rainy	Surface	-	-	-	-	-	-	-	-	-	-	-	-	-	-	-	
	18:34		Middle	1.0	18.40	18.40	18.4	8.54	8.54	8.5	19.77	19.77	19.8	65.7	68.9	67.3	5.48	5.75	5.62
	-		Bottom	-	-	-	-	-	-	-	-	-	-	-	-	-	-	-	-
18/1/2016	-	Cloudy	Surface	-	-	-	-	-	-	-	-	-	-	-	-	-	-	-	
	18:25		Middle	1.5	18.40	18.40	18.4	8.49	8.49	8.5	25.74	25.74	25.7	65.7	64.9	65.3	5.24	5.22	5.23
	-		Bottom	-	-	-	-	-	-	-	-	-	-	-	-	-	-	-	-
20/1/2016	-	Cloudy	Surface	-	-	-	-	-	-	-	-	-	-	-	-	-	-	-	
	19:50		Middle	1.5	17.90	17.90	17.9	8.54	8.54	8.5	24.89	24.89	24.9	76.0	74.4	75.2	6.20	6.10	6.15
	-		Bottom	-	-	-	-	-	-	-	-	-	-	-	-	-	-	-	-
22/1/2016	-	Cloudy	Surface	-	-	-	-	-	-	-	-	-	-	-	-	-	-	-	
	0:10		Middle	1.5	16.20	16.20	16.2	8.80	8.80	8.8	14.89	14.89	14.9	66.5	64.7	65.6	5.91	5.80	5.86
	-		Bottom	-	-	-	-	-	-	-	-	-	-	-	-	-	-	-	-
25/1/2016	-	Fine	Surface	-	-	-	-	-	-	-	-	-	-	-	-	-	-	-	
	2:28		Middle	1.0	10.90	10.90	10.9	8.77	8.77	8.8	15.33	15.33	15.3	61.4	60.2	60.8	5.84	5.72	5.78
	-		Bottom	-	-	-	-	-	-	-	-	-	-	-	-	-	-	-	-

Remarks:
Single underline denotes exceedance over Action Level.
Double underline denotes exceedance over Limit Level.

Graphic Presentation of Enhanced Water Monitoring Results (DO) at C6 - Excelsior Hotel





Graphic Presentation of Enhanced Water Monitoring Results (DO) at Ex-WPCWA SW - South-western corners of ex-Public Cargo Works Area

